

WICHITA FALLS, TEXAS

ILS or LOC/DME Y RWY 33L

LOC/DME I-SPS 109.7 Chan 34	APCH CRS 333°	Rwy Idg 33L 13.100 33C 10.003 TDZE 33L 1000 33C 989 Arpt Elev 1019
---	-------------------------	---

[USAF]

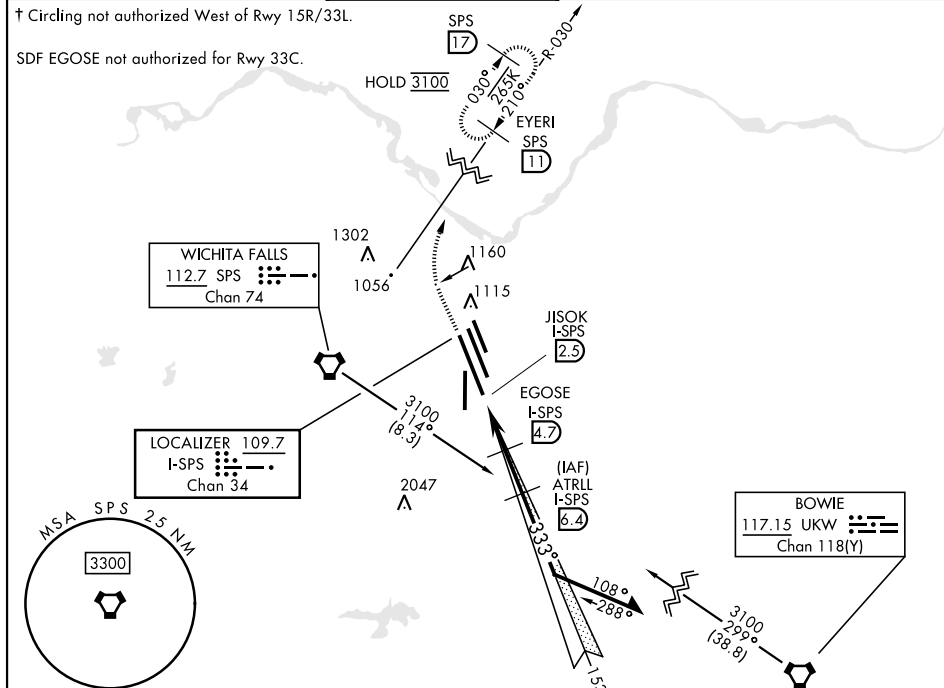
SHEPPARD AFB/
WICHITA FALLS MUNI (KSPS)

▽ ** When ALS inop, increase vis to ¾ mile. *** When ALS inop, increase CAT AB vis to 1 mile; CAT CDE vis to 1½ miles.	Rwy 33L MALSR A5	Rwy 33C ALSF-1 A1	MISSED APPROACH: Climb to 2200, then climbing right turn to 3100 via SPS VORTAC R-030 to EYERI (SPS R-030/11) and hold.
---	-------------------------------	--------------------------------	---

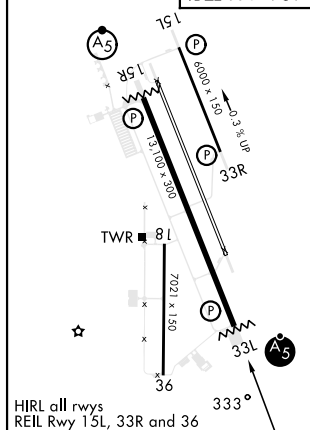
ATIS ★ 132.05 269.9	APP CON 118.2 269.025	TOWER ★ 119.75 279.525 (CTAF)	GND CON 125.5 289.4	CLNC DEL 121.2 282.225	ASR
-------------------------------	---------------------------------	---	-------------------------------	----------------------------------	-----

† Circling not authorized West of Rwy 15R/33L.

SDF EGOSE not authorized for Rwy 33C.



ELEV 1019	TDZE 33L 1000 TDZE 33C 989
------------------	---



WICHITA FALLS, TEXAS

33°59'N-98°30'W

SHEPPARD AFB/WICHITA FALLS MUNI (KSPS)

Amdt 7 23JAN25

ILS or LOC/DME Y RWY 33L

	2200	3100	EYERI SPS R-030	11	ATRLL I-SPS 6.4	3100	EGOSE I-SPS 4.7	2300	1740	2300	2500	153°	333°	Remain within 15 NM	GS 3.00° TCH 48
									2.2 NM	1.8 NM					
CATEGORY	A	B	C	D	E										
S-ILS 33L *		1200-½	200	(200-½)											
S-LOC 33L **		1340-½	340	(400-½)											
SIDESTEP 33C ***	1440-½	451 (500-½)	1440-7/8	451 (500-7/8)											
C CIRCLING†	1440-1 421 (500-1)	1480-1 461 (500-1)	1480-1½ 461 (500-1½)	2100-3	1081 (1100-3)										

EMERG SAFE ALT 100 NM 4600
VGSI and ILS glidepath not coincident
(VGSI Angle 3.00/TCH 56).