

WICHITA FALLS, TEXAS

HI-TACAN RWY 33L

TACAN Chan <b>45</b>	APCH CRS <b>334°</b>	Rwy Idg <b>13,100</b> TDZE <b>1000</b> Arpt Elev <b>1019</b>	[USAF]	SHEPPARD AFB/WICHITA FALLS MUNI	(KSPS)
-------------------------	-------------------------	--	--------	---------------------------------	--------

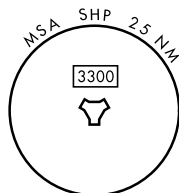
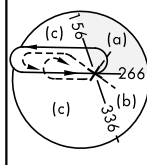
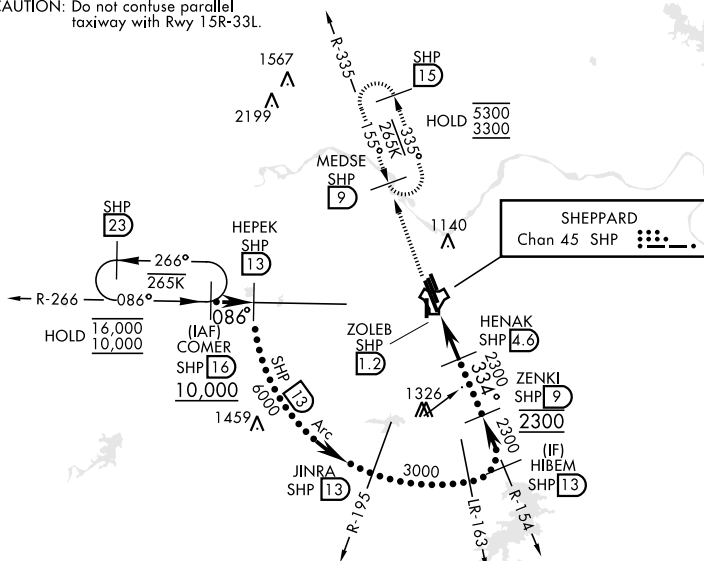
- T** \* When ALS inop, increase CAT CDE vis to 1½ miles.  
 \*\* Circling not authorized W of Rwy 15R-33L.



**MISSED APPROACH:** Climb and maintain 3300, intercept SHP TACAN R-335 to SHP R-335/9 DME (MEDSE) and hold.

ATIS★ 132.05 269.9	APP CON 118.2 269.025	TOWER ★ 119.75 0 279.525 (CTAF)	GND CON 125.5 289.4	CLNC DEL 121.2 282.225	ASR
-----------------------	--------------------------	------------------------------------	------------------------	---------------------------	-----

**CAUTION:** Do not confuse parallel taxiway with Rwy 15R-33L.



EMERG SAFE ALT 100 NM 4600

3300  
SHR  
R-335

MEDSE  
SHR  
9

VGSI and descent angles  
not coincident.

HIBEM  
SHR  
13

3000

ZENKI  
SHR  
9

2300

33.4°

3.06°  
TCH 56

0.4 3.4 NM

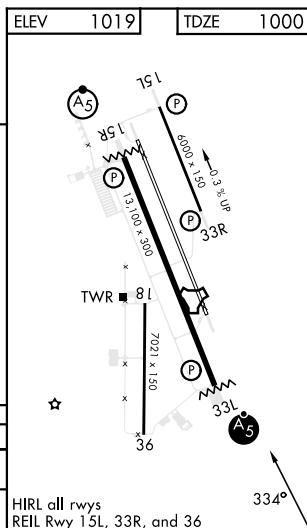
ENAK  
SHR  
4.6

ZOLEB  
SHR  
1.2

SHR  
1.9

TACAN  
SHR

CATEGORY	C	D	E
S-33L *	1420- $\frac{3}{4}$	420 (500- $\frac{3}{4}$ )	
CIRCLING **	1480-1½ 461 (500-1½)	2100-3	1081 (1100-3)



WICHITA FALLS, TEXAS

33°59'N-98°30'W

SHEPPARD AFB/WICHITA FALLS MUNI (KSPS)

## HI-TACAN RWY 33L

SC-2, 10 JUL 2025 to 07 AUG 2025

SC-2, 10 JUL 2025 to 07 AUG 2025