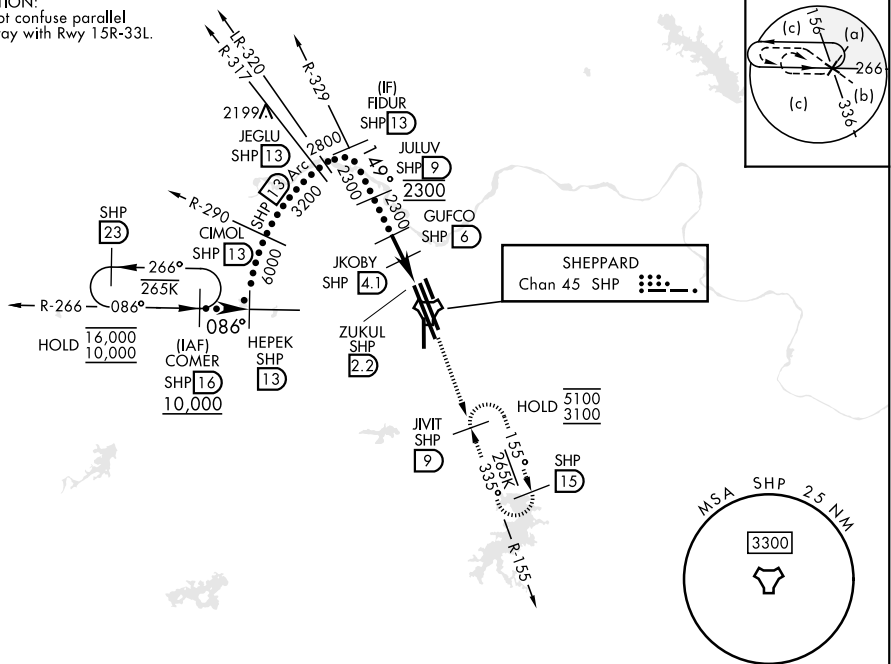


WICHITA FALLS, TEXAS

HI-TACAN RWY 15R

TACAN SHP Chan 45	APCH CRS 149°	Rwy Idg 13,100 TDZE 998 Arpt Elev 1019	[USAF]	SHEPPARD AFB/WICHITA FALLS MUNI	(KSPS)
* When ALS inop, increase CAT CDE vis to 1¼ miles. ** Circling not authorized W of Rwy 15R-33L.			MALSR A5	MISSED APPROACH: Climb and maintain 3100, intercept SHP TACAN R-155 to SHP R-155/9 DME (JIVIT) and hold.	
ATIS★ 132.05 269.9	APP CON 118.2 269.025	TOWER★ 119.75 279.525 (CTAF)	GND CON 125.5 289.4	CLNC DEL 121.2 282.225	ASR

CAUTION:
Do not confuse parallel
taxiway with Rwy 15R-33L.



EMERG SAFE ALT 100 NM 4600

VGSI and descent angle not coincident.			3100 SHP R-155	JIVIT SHP 9
CATEGORY	C	D	E	
S-15R*	1420-¾	422 (500-¾)		
CIRCLING**	1480-1½ (500-1½)	2100-3	1081 (1100-3)	

HI-TACAN RWY 15R