

WICHITA, KANSAS

TACAN RWY 1R

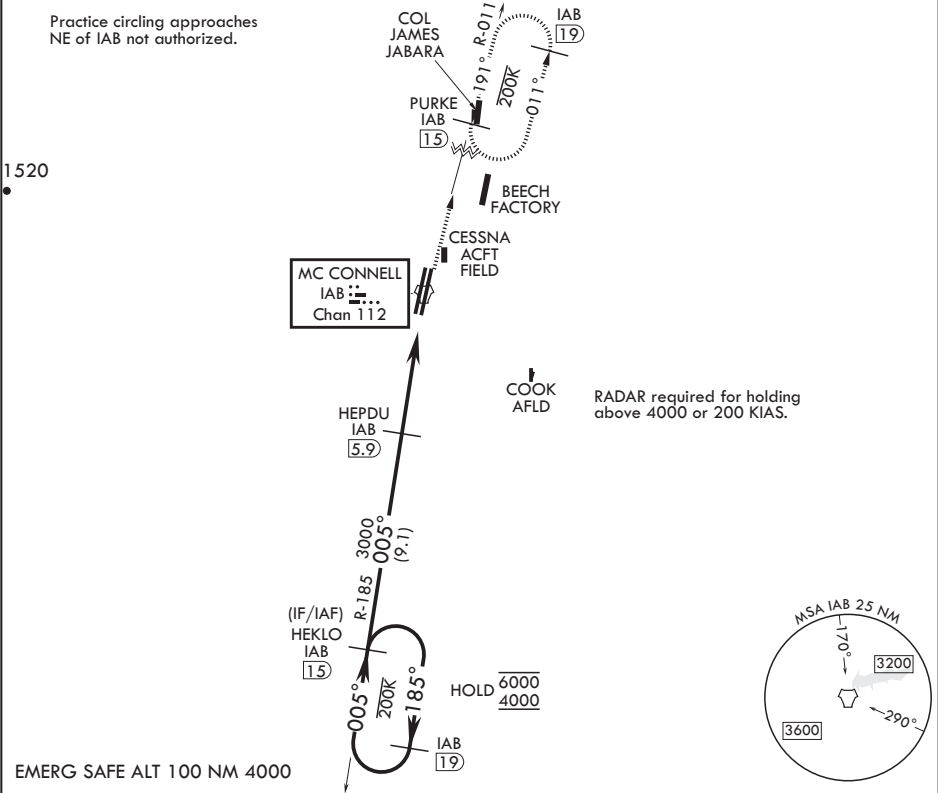
TACAN IAB Chan 112	APCH CRS 005°	Rwy Idg TDZE Arpt Elev	12,007 1347 1372
-----------------------	------------------	------------------------------	------------------------

- (USAF)

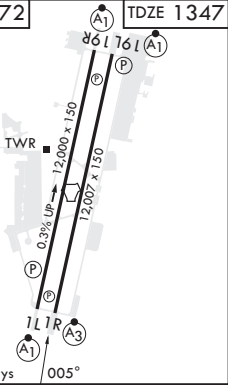
MC CONNELL AFB (KIAB)

<p>▼ *When ALS inop, increase CAT AB RVR to 55 and vis to 1 mile, CAT CDE vis to 1 1/4 miles. **Circling not authorized W of Rwy 1L-19R.</p>	<p>SSALR A3</p>	<p>MISSED APPROACH: Climb to 4000 via IAB TACAN R-011 to 15 DME (PURKE) and hold as published. Expect further clearance from ATC.</p>
--	---------------------	---

D-ATIS 124.65 269.9	WICHITA APP CON 134.8 269.1	TOWER 127.25 291.775	GND CON 118.0 275.8
------------------------	--------------------------------	-------------------------	------------------------



HEKLO 15		VGSi and descent angles not coincident (VGSi Angle 3.00/TCH 64)		4000 IAB R-011	PURKE IAB 15	ELEV 1372	TDZE 1347
6000 4000		185° 005°		HEPDU 5.9		TACAN	
		3000 3.03° TCH 60		2.1		WVIL 1.6	
		4.3 NM		0.7			
CATEGORY	A	B	C	D	E		
S-1R*	1780/40		433	(500-3/4)			
CIRCLING**	1900-1 528 (600-1)		1940-1½ 568 (600-1½)	1940-2 568 (600-2)	2400-3 1028 (1100-3)		



WICHITA, KANSAS

37°37'N - 97°16'W

MC CONNELL AFB (KIAB)

Amtd 7 28DEC23

TACAN RWY 1R

NC-2, 10 JUL 2025 to 07 AUG 2025

NC-2, 10 JUL 2025 to 07 AUG 2025