

WICHITA, KANSAS

TACAN RWY 1L

TACAN IAB Chan 112	APCH CRS 011°	Rwy Idg 12,000 TDZE 1347 Arpt Elev 1372
-----------------------	------------------	---

- (USAF)

MC CONNELL AFB (KIAB)

T * When ALS inop, increase CAT AB RVR to 55 and vis to 1 mile, CAT CDE vis to 1 1/4 miles.
** Circling not authorized W of Rwy 1L-19R.

ALSF-1

MISSED APPROACH: Climb to 4000 via IAB TACAN R-011 to 15 DME (PURKE) and hold as published. Expect further clearance from ATC.

D-ATIS 124.65 269.9	WICHITA APP CON 134.8 269.1	TOWER 127.25 291.775	GND CON 118.0 275.8
------------------------	--------------------------------	-------------------------	------------------------

Practice circling approaches
NE of IAB not authorized.

1526

COL
JAMES
JABARA

PURK
IAB
15

BEECH
FACTORY

SSNA
CFT
FIELD

MC CONNELL
IAB
Chan 112

WIBOD
IAB -
59

† RADAR required for holding above 4000 or greater than 200 KIAS.

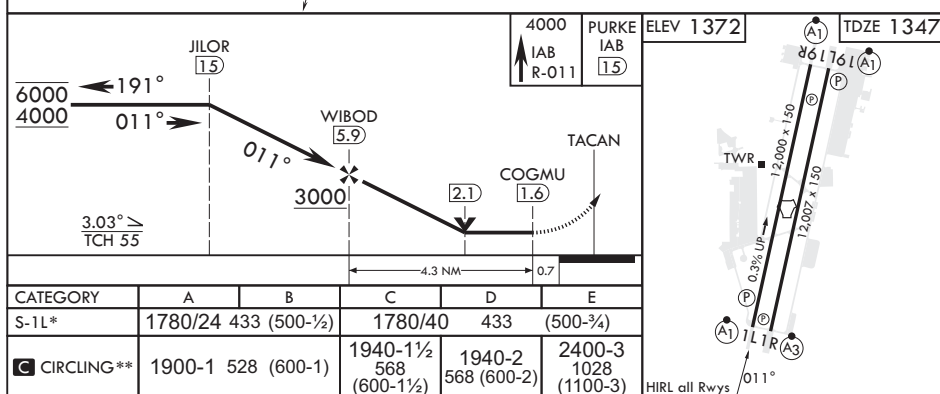
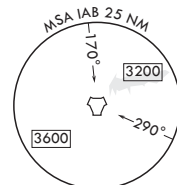
(IF/IAF)
JILOR
IAB
15
4000

0177
(9.1)

HOLD 6000
4000



EMERG SAFE ALT 100 NM 4000



WICHITA, KANSAS

37°37'N - 97°16'W

MC CONNELL AFB (KIAB)

Amdt 6 28DEC23

TACAN RWY 1L

NC-2, 10 JUL 2025 to 07 AUG 2025