

WICHITA, KANSAS

## TACAN RWY 19R

TACAN IAB Chan <b>112</b>	APCH CRS <b>186°</b>	Rwy Idg <b>12,000</b> TDZE <b>1372</b> Arpt Elev <b>1372</b>
------------------------------	-------------------------	--

[USAF]

MC CONNELL AFB (KIAB)

**T** \* When ALS inop, increase CAT AB RVR to 55 and vis to 1 mile, CAT CDE vis to 1 3/8 miles.

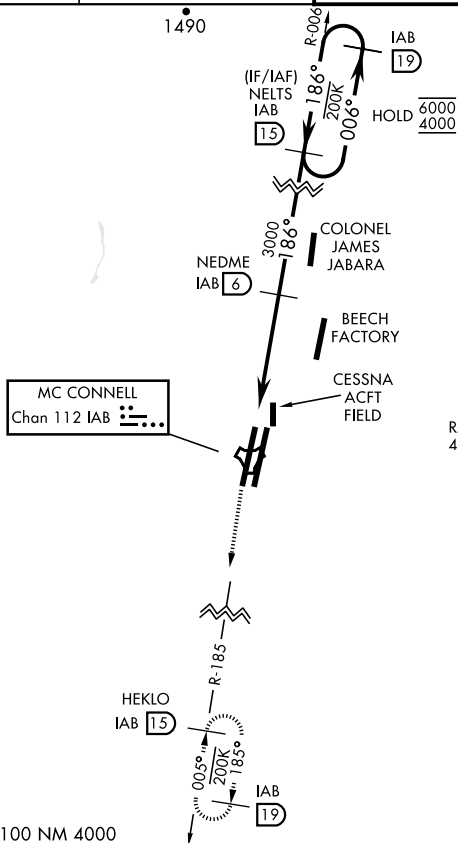
\*\* Circling not authorized W of Rwy 1L-19R.

ALSF-1

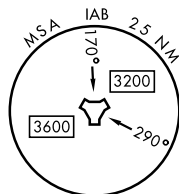
 

**MISSED APPROACH:** Climb to 4000 via IAB  
TACAN R-185 to 15 DME (HEKLO) and hold as  
published. Expect further clearance from ATC.

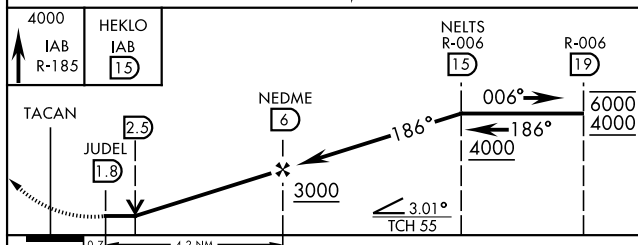
D-ATIS	WICHITA APP CON	TOWER	GND CON
124.65 269.9	134.8 269.1	127.25 291.775	118.0 275.8



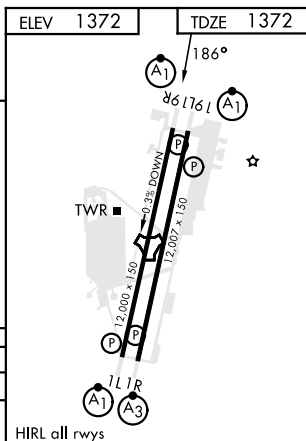
RADAR required for holding above 4000 or greater than 200 KIAS.



EMERG SAFE ALT 100 NM 4000



CATEGORY	A	B	C	D	E
S-19R *	1880/24	508 (600-1/2)	1880/55	508 (600-1)	
<b>C</b> CIRCLING **	1900-1	528 (600-1)	1940-1 1/2 568 (600-1 1/2)	1940-2 568 (600-2)	2400-3 1028 (600-3)



WICHITA, KANSAS

37°37'N-97°16'W

MC CONNELL AFB (KIAB)

Amdt 6 28DEC23

TACAN RWY 19R

NC-2, 10 JUL 2025 to 07 AUG 2025

NC-2, 10 JUL 2025 to 07 AUG 2025