

WICHITA, KANSAS

RNAV (GPS) Y RWY 19R

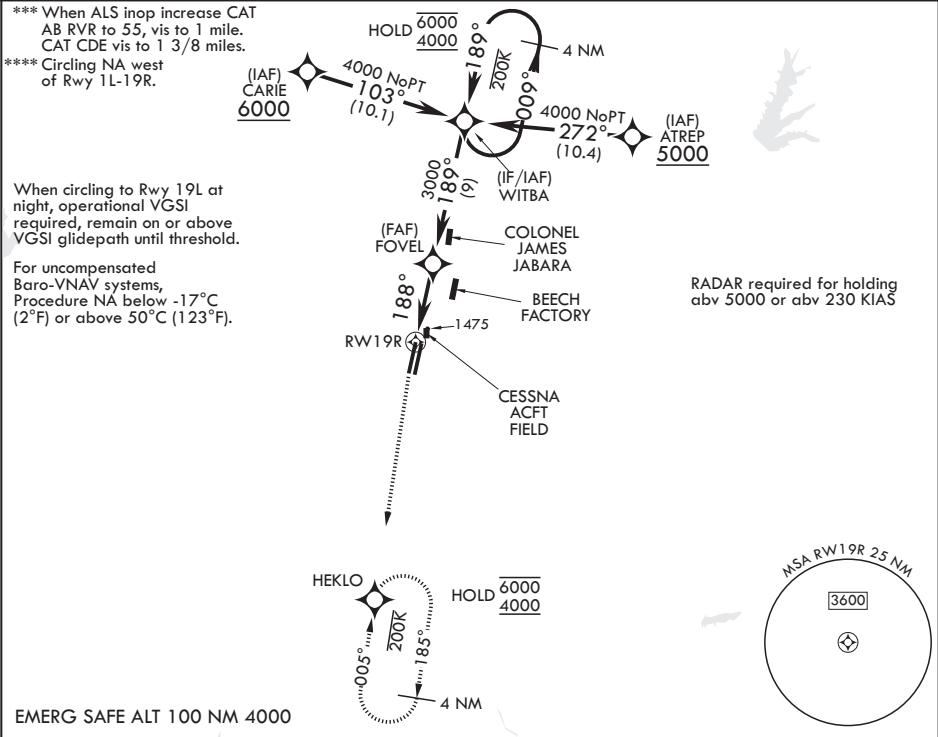
WAAS CH 71277 W19A	APCH CRS 188°	Rwy ldg TDZE Arpt Elev	12,000 1372 1372
--------------------------	------------------	------------------------------	------------------------

- (USAF)

MC CONNELL AFB (KIAB)

RNP APCH-GPS	ALSF-1 	MISSED APPROACH: Climb to 2000 then climbing to 4000 direct HEKLO and hold. Expect further clearance from ATC.
* When ALS inop, increase RVR to 40, vis to 3/4 mile. ** When ALS inop increase RVR to 55, vis to 1 mile.		

D-ATIS 124.65 269.9	WICHITA APP CON 134.8 269.1	TOWER 127.25 291.775	GND CON 118.0 275.8
------------------------	--------------------------------	-------------------------	------------------------



EMERG SAFE ALT 100 NM 4000

2000

↑

4000

↖

HEKLO

⬇

WITBA

4 NM Holding Pattern

009° → 6000

← 189° 4000

FOVEL

189°

188°

3000

RW19R

1.2 NM to RW19R

4.9 NM

GP 3.00°

TCH 56

CATEGORY	A	B	C	D	E
LPV DA*	1572/24		200	(200-½)	
LNAV/VNAV DA**	1748/35		376	(400-¾)	
LNAV MDA***	1820/24 448 (500-½)		1820/45	448	(500-¾)
<div>C</div> CIRCLING****	1900-1 528 (600-1)		1900-1½ 528 (600-½)	1940-2 568 (600-2)	2400-3 1028 (1100-3)

ELEV 1372

188°

TDZE 1372

TWR

0.3% DOWN

12,000 x 150

12,000 x 150

186

176

161

151

141

131

121

111

101

91

81

71

61

51

41

31

21

11

1L

1R

A1

A2

A3

HIRL all rwys

WICHITA, KANSAS

37°37'N - 97°16'W

MC CONNELL AFB (KIAB)

Amtd 7 12JUN25

RNAV (GPS) Y RWY 19R

NC-2, 10 JUL 2025 to 07 AUG 2025

NC-2, 10 JUL 2025 to 07 AUG 2025