

APCH CRS	Rwy Idg	12,000
008°	TDZE	1347
	Arpt Elev	1372

- (USAF)

MC CONNELL AFB (KIAB)

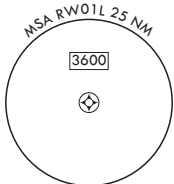
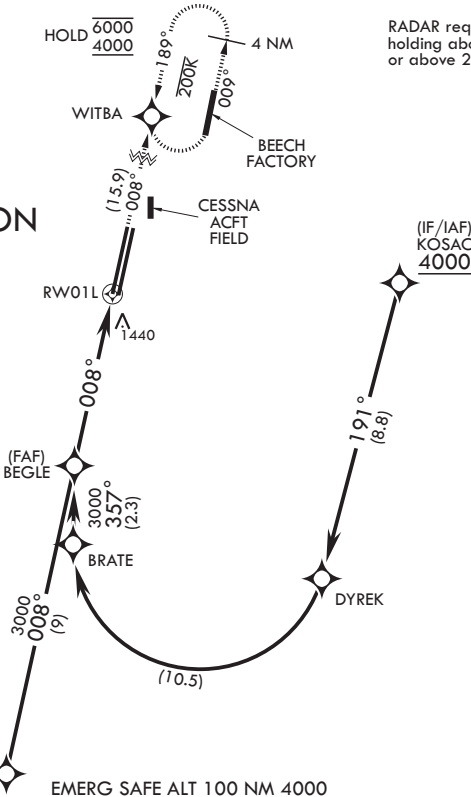
RNP AR APCH-GPS	ALSIF-1	MISSED APPROACH: Climb to 4000 direct WITBA and hold as published. Expect further clearance from ATC.
▼ * When ALS inop, increase RVR to 60, vis to 1 1/8 miles. ** When ALS inop, increase vis to 1 1/4 miles.		

D-ATIS 124.65 269.9	WICHITA APP CON 134.8 269.1	TOWER 127.25 291.775	GND CON 118.0 275.8
------------------------	--------------------------------	-------------------------	------------------------

For uncompensated Baro-VNAV systems, Procedure not authorized below -17°C. or above 54°C.

RADAR required for holding above 5000 or above 230 KIAS

AUTHORIZATION REQUIRED



See planview for multiple IF locations		4000 tr 008°	WITBA ELEV 1372	TDZE 1347
CATEGORY	A	B	C	D
RNP 0.10 DA*	1735/35	388	(400-%)	
RNP 0.30 DA**	1787/40	440	(500-¾)	