

WICHITA, KANSAS

ILS or LOC RWY 1L

LOC I-IAB 111.1	APCH CRS 008°	Rwy Idg 12,000
		TDZE 1347
		Arpt Elev 1372

- (USAF)

MC CONNELL AFB (KIAB)

RADAR or DME required	ALSF-1 	MISSED APPROACH: Climb to 2000 then climbing right turn to 4000, intercept IAB TACAN R-011 to 15 DME (PURKE) and hold. Expect further clearance from ATC.
* When ALS inop, increase RVR to 40 and vis to 3/4 mile. ** When ALS inop, increase RVR to 55 and vis to 1 mile.		

D-ATIS 124.65 269.9	WICHITA APP CON 134.8 269.1	TOWER 127.25 291.775	GND CON 118.0 275.8
------------------------	--------------------------------	-------------------------	------------------------

*** Circling not authorized
W of Rwy 1L-19R.

When Circling to Rwy 19L at night, operational VGSI required, remain on or above VGSI glidepath until threshold.

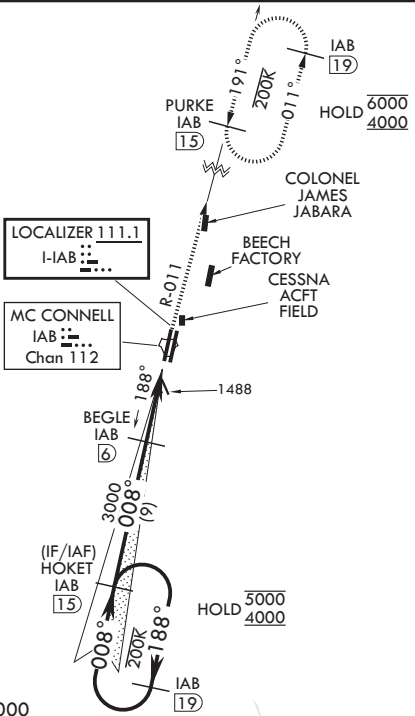
CAUTION: VGSI and ILS TCH are not coincidental.

Practice circling approaches NE of IAB not authorized.

Rwy 1L glideslope unusable for coupled approaches at or below 1533' MSL.

CAUTION: LOC front course unusable beyond 25° left/right of course.

RADAR required for holding above 4000



EMERG SAFE ALT 100 NM 4000

				ELEV 1372	TDZE 1347
GS 3.00° TCH 56					
CATEGORY	A	B	C	D	E
S-ILS 1L*	1547/24		200	(200-½)	
S-LOC 1L**	1740/24	393 (400-½)	1740/35	393	(400-¾)
CIRCLING***	1900-1	528 (600-1)	1940-1½ 568 (600-1½)	1940-2 568 (600-2)	2400-3 1028 (1100-3)
FAF to MAP 4.6 NM					
Knots					
Min:Sec					

WICHITA, KANSAS

37°37'N - 97°16'W

MC CONNELL AFB (KIAB)

Amdt 8 12JUN25

ILS or LOC RWY 1L

NC-2, 10 JUL 2025 to 07 AUG 2025

NC-2, 10 JUL 2025 to 07 AUG 2025