

ILS or LOC RWY 19R

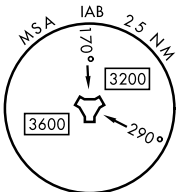
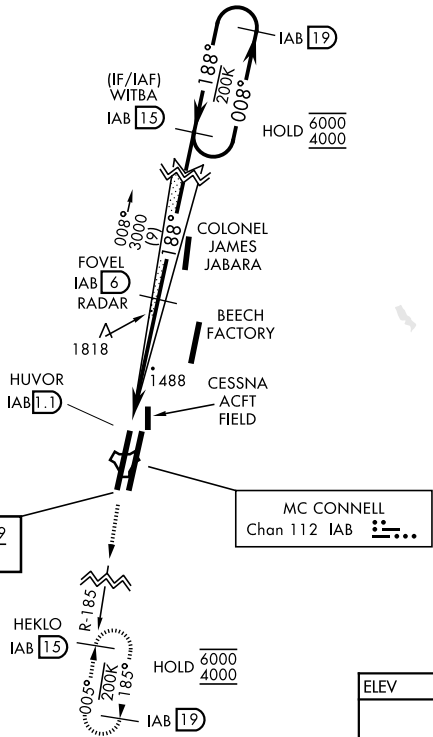
LOC I-CWX <b>109.9</b>	APCH CRS <b>188°</b>	Rwy Idg <b>12,000</b> TDZE <b>1372</b> Arpt Elev <b>1372</b>
---------------------------	-------------------------	--

[USAF]

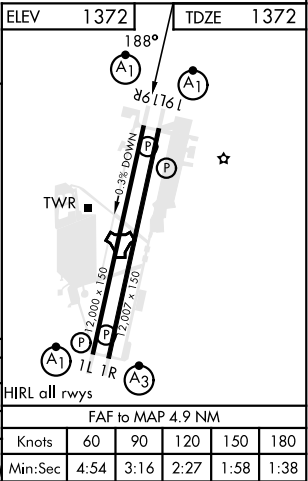
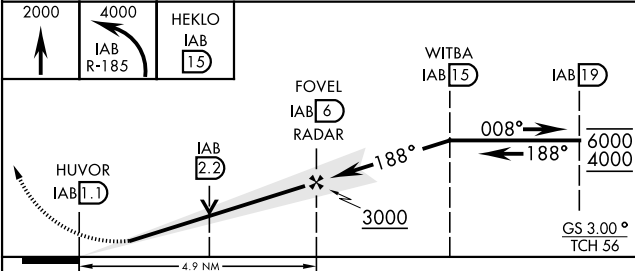
MC CONNELL AFB (KIAB)

RADAR or DME required		ALSIF-1 	MISSED APPROACH: Climb to 2000 then climbing left turn to 4000, intercept IAB TACAN R-185 to 1.5 DME (HEKLO) and hold. Expect further clearance from ATC.
D-ATIS <b>124.65 269.9</b>		WICHITA APP CON <b>134.8 269.1</b>	TOWER <b>127.25 291.775</b>
			GND CON <b>118.0 275.8</b>

When circling to Rwy 19L at night, operational VGSI required, remain on or above VGSI glidepath until threshold.



EMERG SAFE ALT 100 NM 4000



CATEGORY	A	B	C	D	E
S-ILS 19R *	1572/24		200	(200-½)	
S-LOC 19R **	1780/24	408 (500-½)	1780/40	408 (500-¾)	
*** CIRCLING	1900-1	528 (600-1)	1900-1½ 528 (600-½)	1940-2 568 (600-2)	2400-3 1028 (1100-3)

WICHITA, KANSAS

37°37'N-97°16'W

MC CONNELL AFB (KIAB)

Amtd 8 12JUN25

ILS or LOC RWY 19R

NC-2, 10 JUL 2025 to 07 AUG 2025

NC-2, 10 JUL 2025 to 07 AUG 2025