

TACAN Y RWY 7

TACAN	NUW	APCH CRS	Rwy Idg
Chan 85		058°	TDZE 25
			Arprt Elev 47

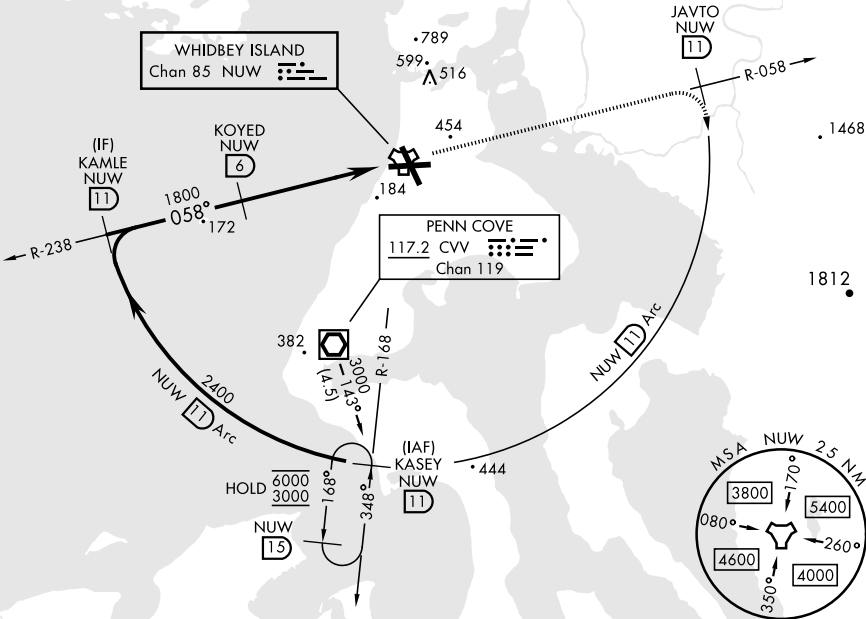
[UN]

WHIDBEY ISLAND NAS (AULT FLD) (KNUW)

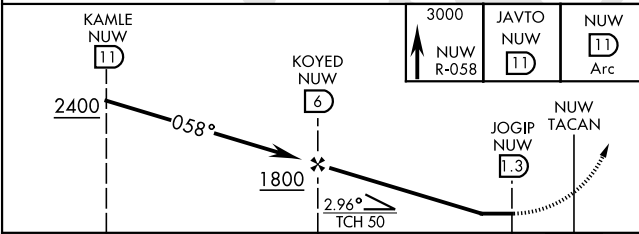
<div><div></div></div>	MISSED APPROACH: Climb to 3000 via NUW TACAN R-058 to JAVTO, then arc SE of NUW via 11 DME Arc to KASEY and hold.
------------------------	---

ATIS 134.15 281.5	WHIDBEY APP CON 120.7 270.8 (E) 118.2 285.65 (W)	WHIDBEY TOWER 127.9 340.2	GND CON 121.75 336.4	CLNC DEL 135.1 379.9	ASR/PAR
----------------------	--	------------------------------	-------------------------	-------------------------	---------

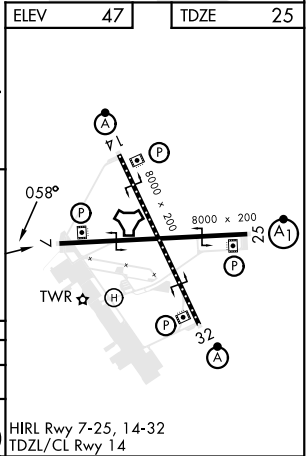
CAUTION: CAT CDE intmed seg length 5 NM



EMERG SAFE ALT 100 NM 15,500



CATEGORY	A	B	C	D	E
S-7	440/55 415 (400-1)		440/60 415 (400-1½)		
CIRCLING	760-1 713 (800-1)		860-2½ 813 (900-2½)	900-2¾ 853 (900-2¾)	1200-3 1153 (1200-3)



TACAN Y RWY 7

NW-1, 10 JUL 2025 to 07 AUG 2025

NW-1, 10 JUL 2025 to 07 AUG 2025