


OAK HARBOR, WASHINGTON

TACAN Y RWY 32

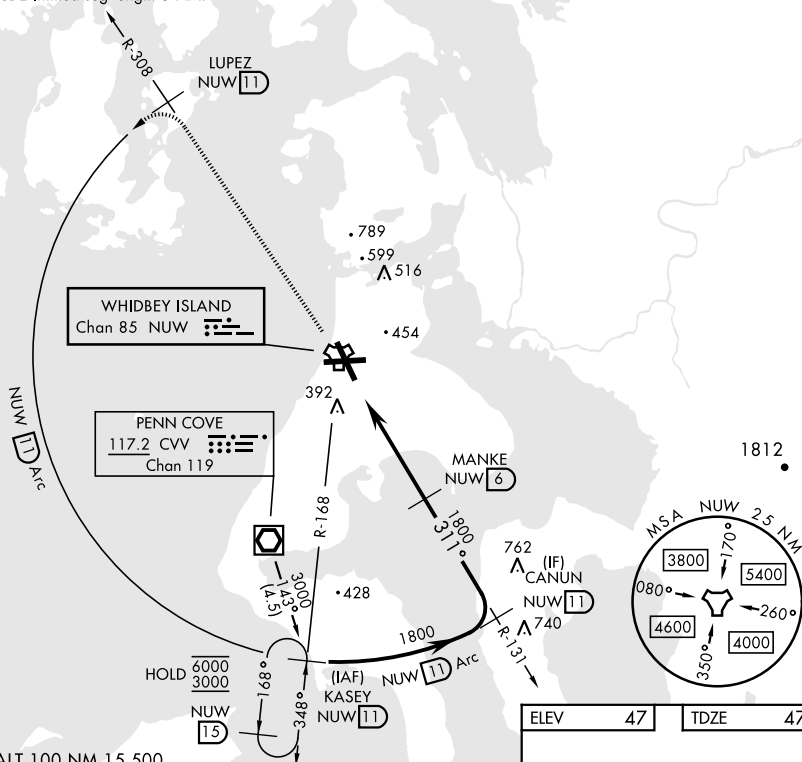
TACAN NUW Chan 85	APCH CRS 311°	Rwy Idg 8000 TDZE 47 Arpt Elev 47
-----------------------------	-------------------------	--

[USN]




WHIDBEY ISLAND NAS (AULT FLD) (KNUW)

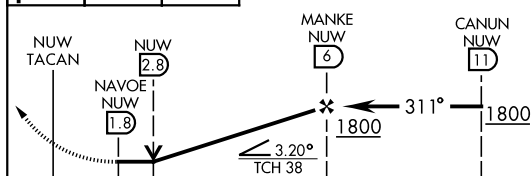
▼ * When ALS inop, increase CAT AB RVR to 55, vis to 1 mile; CAT CDE to 1¾ miles.		ALSF-2 		MISSED APPROACH: Climb to 3000 via NUW TACAN R-308 to LUPEZ, then Arc SW of NUW via 11 DME Arc to KASEY and hold.						
ATIS 134.15 281.5		WHIDBEY APP CON 120.7 270.8 (E) 118.2 285.65 (W)		WHIDBEY TOWER 127.9 340.2		GND CON 121.75 336.4		CLNC DEL 135.1 379.9		ASR/PAR


CAUTION: CAT CDE intmed seg length 5 NM.

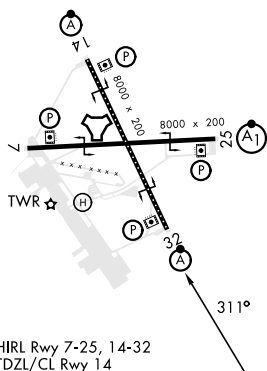


EMERG SAFE ALT 100 NM 15,500

 3000 NUW R-308	LUPEZ NUW 	NUW  Arc
--	---	---



					
CATEGORY	A	B	C	D	E
S-32 *	680/30	633 (700-%)	680-1% 633 (700-1%)		
C CIRCLING	760-1	713 (800-1)	860-2½ 813 (900-2½)	900-2¾ 853 (900-2¾)	1200-3 1153 (1200-3)



OAK HARBOR, WASHINGTON

48° 21' N-122° 39' W

WHIDBEY ISLAND NAS (AULT FLD) (KNUW)

Amdt 4 31OCT24

TACAN Y RWY 32

NW-1, 10 JUL 2025 to 07 AUG 2025

NW-1, 10 JUL 2025 to 07 AUG 2025