

TACAN Y RWY 25

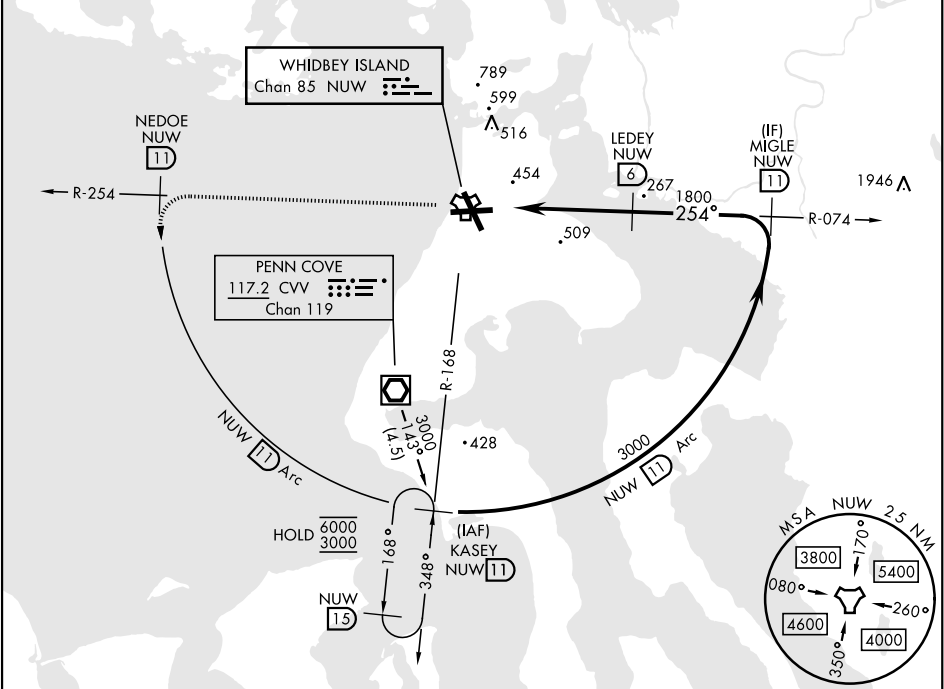
TACAN NUW Chan 85	APCH CRS 254°	Rwy Idg 8000 TDZE 28 Arpt Elev 47
----------------------	------------------	--------------------------------------------------

[USN]

WHIDBEY ISLAND NAS (AULT FLD) (KNUW)

* When ALS inop, increase CAT AB RVR to 55, vis to 1 mile; CAT CDE vis to 2 miles.			ALS-F-1 (A1)	MISSED APPROACH: Climb to 3000 via NUW TACAN R-254 to NEDOE, then arc SW of NUW via 11 DME Arc to KASEY and hold.		
ATIS 134.15 281.5	WHIDBEY APP CON 120.7 270.8 (E) 118.2 285.65 (W)	WHIDBEY TOWER 127.9 340.2	GND CON 121.75 336.4	CLNC DEL 135.1 379.9	ASR/PAR	

CAUTION: CAT CDE intmed seg length 5 NM.



EMERG SAFE ALT 100 NM 15,500

3000

NUW

R-254

NEDOE

NUW

11

NUW

11

Arc

NUW

TACAN

KIGVE

NUW

1.7

LEDEY

NUW

6

MIGLE

NUW

11

3000

1800

254°

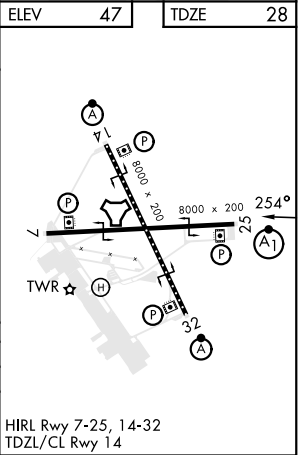
3.17°

TCH 50

0.8

4.3 NM

CATEGORY	A	B	C	D	E
S-25 *	760/30	732 (800-¾)	760-1⅝	732 (800-1½)	
CIRCLING	760-1	713 (800-1)	860-2½ 813 (900-2½)	900-2¾ 853 (900-2¾)	1200-3 1153 (1200-3)



TACAN Y RWY 25

NW-1, 10 JUL 2025 to 07 AUG 2025

NW-1, 10 JUL 2025 to 07 AUG 2025