

TACAN Y RWY 14

TACAN	NUW	APCH CRS	Rwy Idg
Chan	85	141°	TDZE 39
			Arpt Elev 47

[USN]

WHIDBEY ISLAND NAS (AULT FLD) (KNUW)

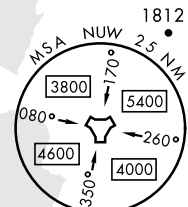
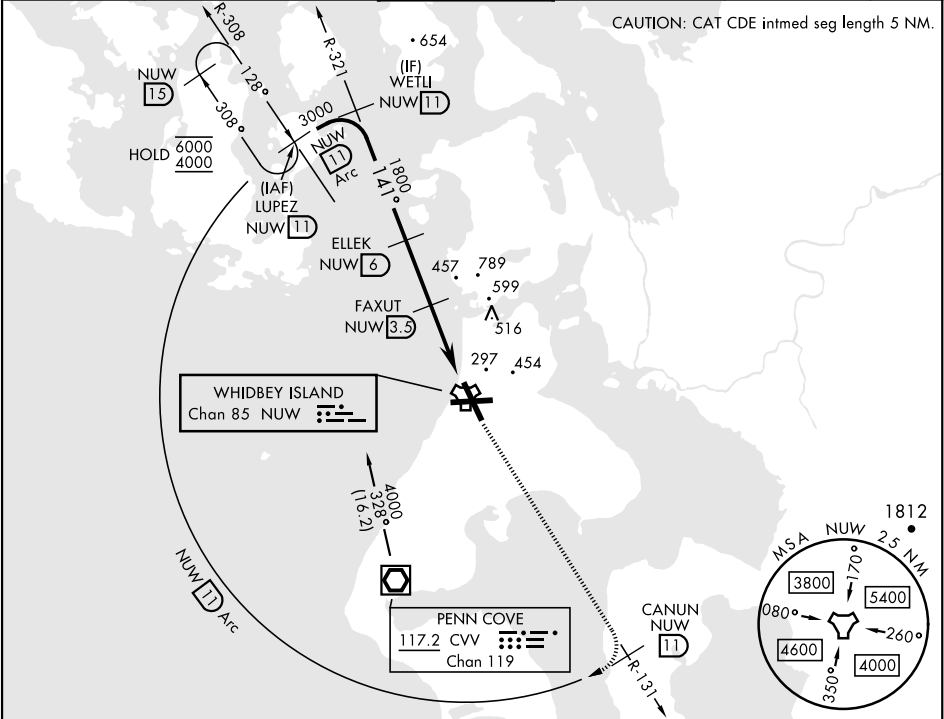
▼ * When ALS inop, increase CAT AB RVR to 55, vis to 1 mile, CAT CDE vis to 1½ miles.

ALSIF-2

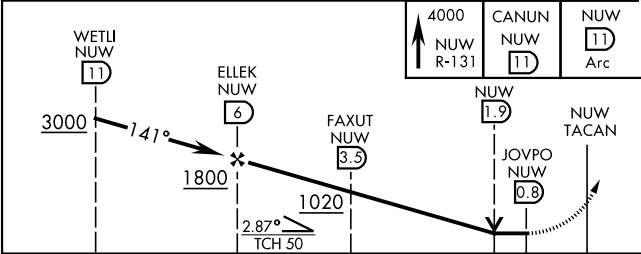
MISSED APPROACH: Climb to 4000 via NUW TACAN R-131 to CANUN, then arc SW of NUW via 11 DME Arc to LUPEZ and hold.

ATIS	WHIDBEY APP CON	WHIDBEY TOWER	GND CON	CLNC DEL	ASR/PAR
134.15 281.5	120.7 270.8 (E) 118.2 285.65 (W)	127.9 340.2	121.75 336.4	135.1 379.9	

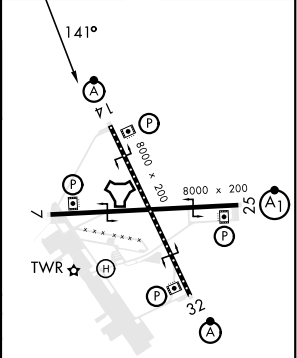
CAUTION: CAT CDE intmd seg length 5 NM.



EMERG SAFE ALT 100 NM 15,500



ELEV	47	TDZE	39
------	----	------	----



CATEGORY	A	B	C	D	E
S-14 *	560/24	521 (600-½)	560/55	521 (600-1)	
CIRCLING	760-1	713 (800-1)	860-2½ 813 (900-2½)	900-2¾ 853 (900-2¾)	1200-3 1153 (1200-3)

HIRL Rwy 7-25, 14-32
TDZL/CL Rwy 14

TACAN Y RWY 14

NW-1, 10 JUL 2025 to 07 AUG 2025

NW-1, 10 JUL 2025 to 07 AUG 2025