

OAK HARBOR, WASHINGTON

RNAV (GPS) RWY 7

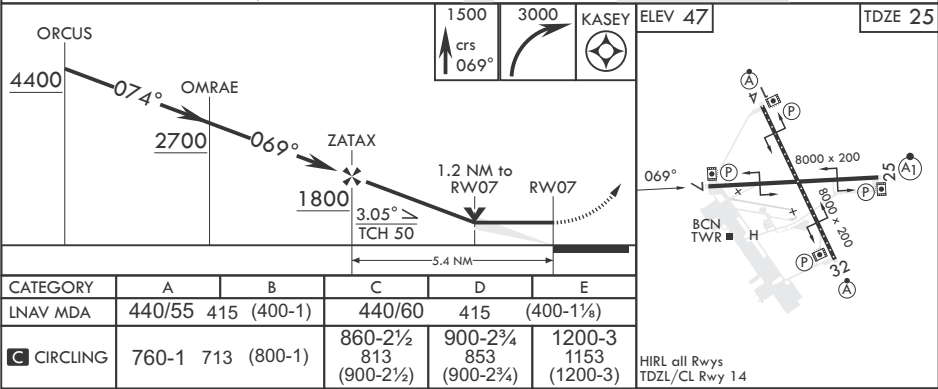
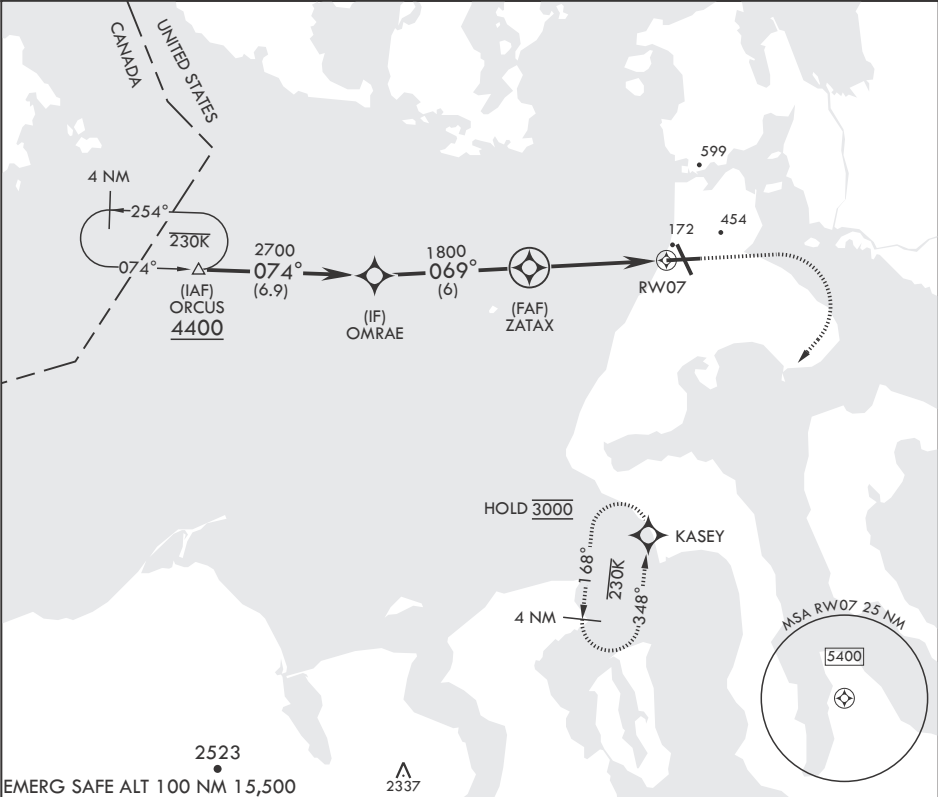
APCH CRS	Rwy Idg	8000
069°	TDZE	25
	Arprt Elev	47

- (USN)

WHIDBEY ISLAND NAS (AULT FLD) (KNUW)

RNP APCH	MISSED APPROACH: Climb to 1500, then climbing right turn to 3000 direct KASEY and hold. Do not exceed 230 KIAS until turn completion.
----------	---

ATIS 134.15 281.5	APP CON/DEP CON 118.2 285.65 (W) 120.7 270.8 (E)	TOWER 127.9 340.2	GND CON 121.75 336.4	CLNC DEL 135.1 379.9	ASR/PAR
----------------------	--	----------------------	-------------------------	-------------------------	---------



OAK HARBOR, WASHINGTON

48°21'N - 122°39'W

WHIDBEY ISLAND NAS (AULT FLD) (KNUW)

Amndt 2 31OCT24

RNAV (GPS) RWY 7

NW-1, 10 JUL 2025 to 07 AUG 2025

NW-1, 10 JUL 2025 to 07 AUG 2025