

OAK HARBOR, WASHINGTON

RNAV (GPS) RWY 32

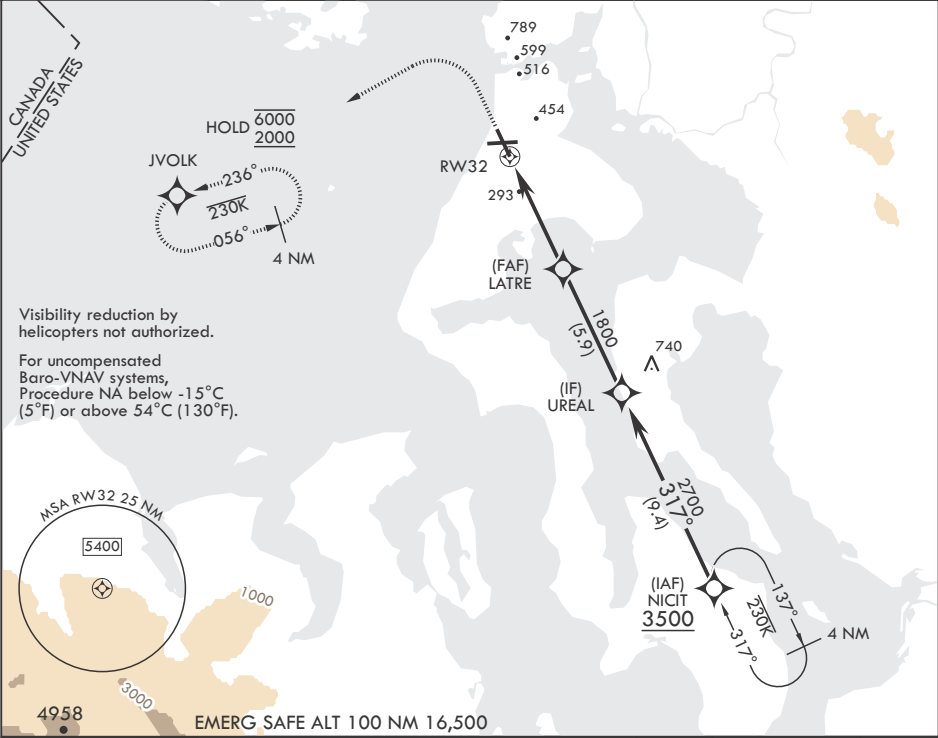
APCH CRS	Rwy Idg	8000
317°	TDZE	47
	Arprt Elev	47

- (USN)

WHIDBEY ISLAND NAS (AULT FLD) (KNUW)

RNP APCH	ALSF-2	MISSED APPROACH: Climb to 1200 then climbing left turn to 2000 direct JVOLK and hold.
* When ALS inop, increase vis to 1 3/8 miles. ** When ALS inop, increase CAT AB RVR to 55, vis to 1 mile; CAT CDE vis to 1 3/8 miles.		

ATIS 134.15 281.5	APP CON/DEP CON 118.2 285.65 (W) 120.7 270.8 (E)	TOWER 127.9 340.2	GND CON 121.75 336.4	CLNC DEL 135.1 379.9	ASR/PAR
----------------------	--	----------------------	-------------------------	-------------------------	---------



1200 2000 JVOLK		ELEV 47		TDZE 47	
CATEGORY	A	B	C	D	E
LNAV/VNAV DA*	560/55		513		(600-1)
LNAV MDA**	560/40	513 (600-¾)	560/55	513	(600-1)
CIRCLING	760-1 713 (800-1)		860-2½ 813 (900-2½)	900-2¾ 853 (900-2¾)	1200-3 1153 (1200-3)
HIRL all Rwys TDZL/CL Rwy 14					

OAK HARBOR, WASHINGTON

48°21'N - 122°39'W

WHIDBEY ISLAND NAS (AULT FLD) (KNUW)

Amdt 3 23JAN25

RNAV (GPS) RWY 32

NW-1, 10 JUL 2025 to 07 AUG 2025

NW-1, 10 JUL 2025 to 07 AUG 2025