

OAK HARBOR, WASHINGTON

WAAS CH <b>44487</b> W25A	APCH CRS <b>249°</b>	Rwy Idg <b>8000</b> TDZE <b>28</b> Arpt Elev <b>47</b>
---------------------------------	-------------------------	--

- (USN)

## RNAV (GPS) RWY 25

WHIDBEY ISLAND NAS (AULT FLD) (KNUW)

RNP APCH

**T** \* When ALS inop, increase RVR to 40, vis to 3/4 mile.  
\*\* When ALS inop, increase vis to 1 7/8 miles.

ALSF-1

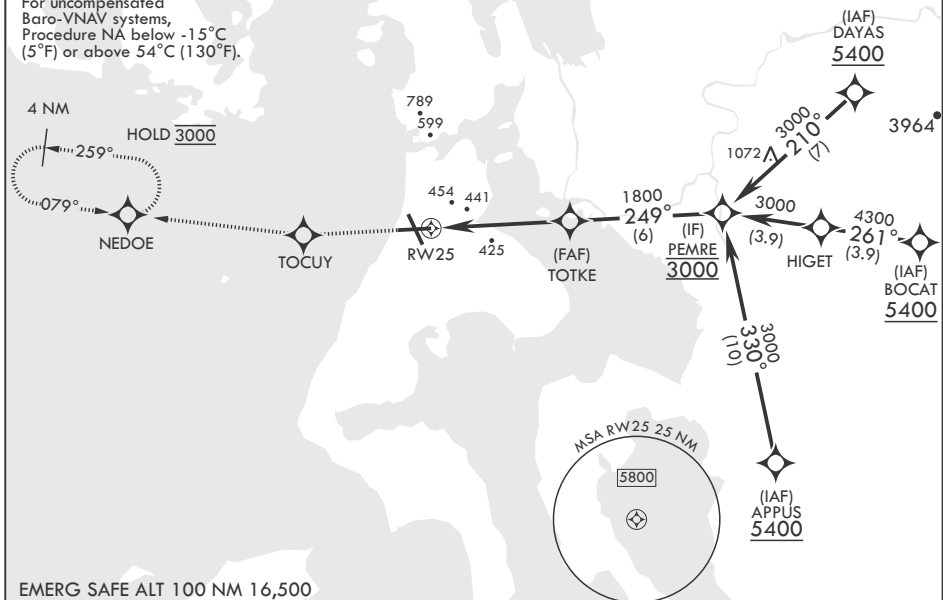


**MISSED APPROACH:** Climb to 3000 direct TOCUY and track 259° to NEDOE and hold.

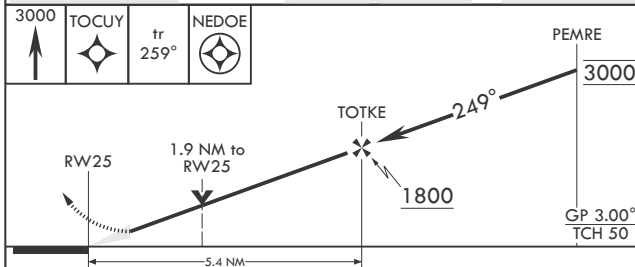
ATIS 134.15 281.5	APP CON/DEP CON 118.2 285.65 (W) 120.7 270.8 (E)	TOWER 127.9 340.2	GND CON 121.75 336.4	CLNC DEL 135.1 379.9	ASR/PAR
----------------------	--	----------------------	-------------------------	-------------------------	---------

\*\*\* When ALS inop, increase CAT  
AB RVR to 55, vis to 1 mile;  
CAT CDE vis to 1 7/8 miles.

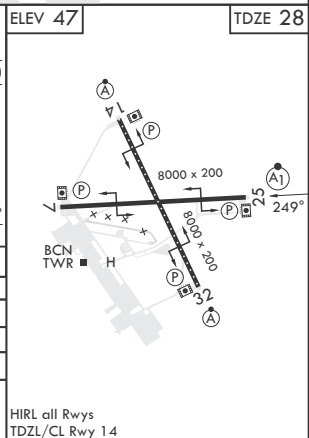
For uncompensated  
Baro-VNAV systems,  
Procedure NA below -15°C  
(5°F) or above 54°C (130°F).



EMERG SAFE ALT 100 NM 16,500



CATEGORY	A	B	C	D	E
LPV DA*	278/24		250	(300-½)	
LNAY/VNAY DA**	685-1⅓		657	(700-1⅓)	
LNAY MDA***	680/24	652 (700-½)	680-1⅓	652	(700-1⅓)
<b>C</b> CIRCLING	760-1 713 (800-1)		860-2½ 813 (900-2½)	900-2¼ 853 (900-2¼)	1200-3 1153 (1200-3)



OAK HARBOR, WASHINGTON

48°21'N - 122°39'W

WHIDBEY ISLAND NAS (AULT FLD) (KNUW)

## RNAV (GPS) RWY 25

Amdt 3 31OCT24

HIRL all Rwys  
TDZL/CL Rwy 14

NW-1, 10 JUL 2025 to 07 AUG 2025

NW-1, 10 JUL 2025 to 07 AUG 2025