

OAK HARBOR, WASHINGTON

RNAV (GPS) RWY 14

WAAS CH 50004 W14A	APCH CRS 137°	Rwy Idg 8000 TDZE 39 Arpt Elev 47
---------------------------------	------------------	--

- (USN)

WHIDBEY ISLAND NAS (AULT FLD) (KNUW)

RNP APCH

T * When TDZ/CL lights inop, increase RVR to 24. When ALS inop, increase RVR to 40, vis to 3/4 mile.
** When ALS inop, increase RVR to 60, vis to 1 1/8 miles.

ALSE-2

 FIDPO, and on track 218° to WADPA and hold. Do not exceed 230K.

ATIS 134.15 281.5	APP CON/DEP CON 118.2 285.65 (W) 120.7 270.8 (E)	TOWER 127.9 340.2	GND CON 121.75 336.4	CLNC DEL 135.1 379.9	ASR/PAR
----------------------	--	----------------------	-------------------------	-------------------------	---------

*** When ALS inop, increase CAT
AB RVR to 55, vis to 1 mile;
CAT CDE vis to 1 3/8 miles.

For uncompensated Baro-VNAV systems, Procedure NA below -15°C (5°F) or above 54°C (129°F).

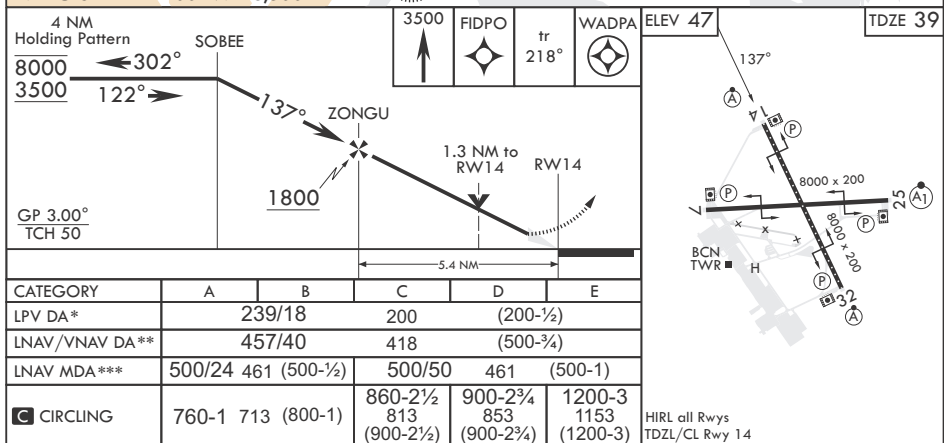
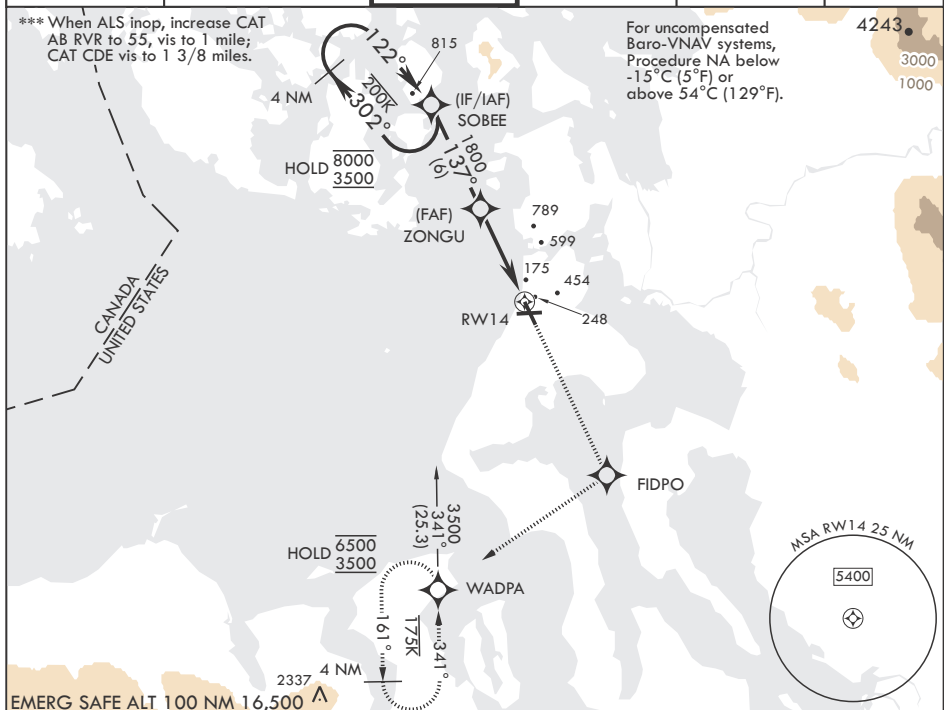
4243

1000

1000

NW-1, 10 JUL 2025 to 07 AUG 2025

NW-1. 10 JUL 2025 to 07 AUG 2025



OAK HARBOR, WASHINGTON

48°21'N - 122°39'W

WHIDBEY ISLAND NAS (AULT FLD) (KNUW)

Amdt 5 31 OCT 24

RNAV (GPS) RWY 14