

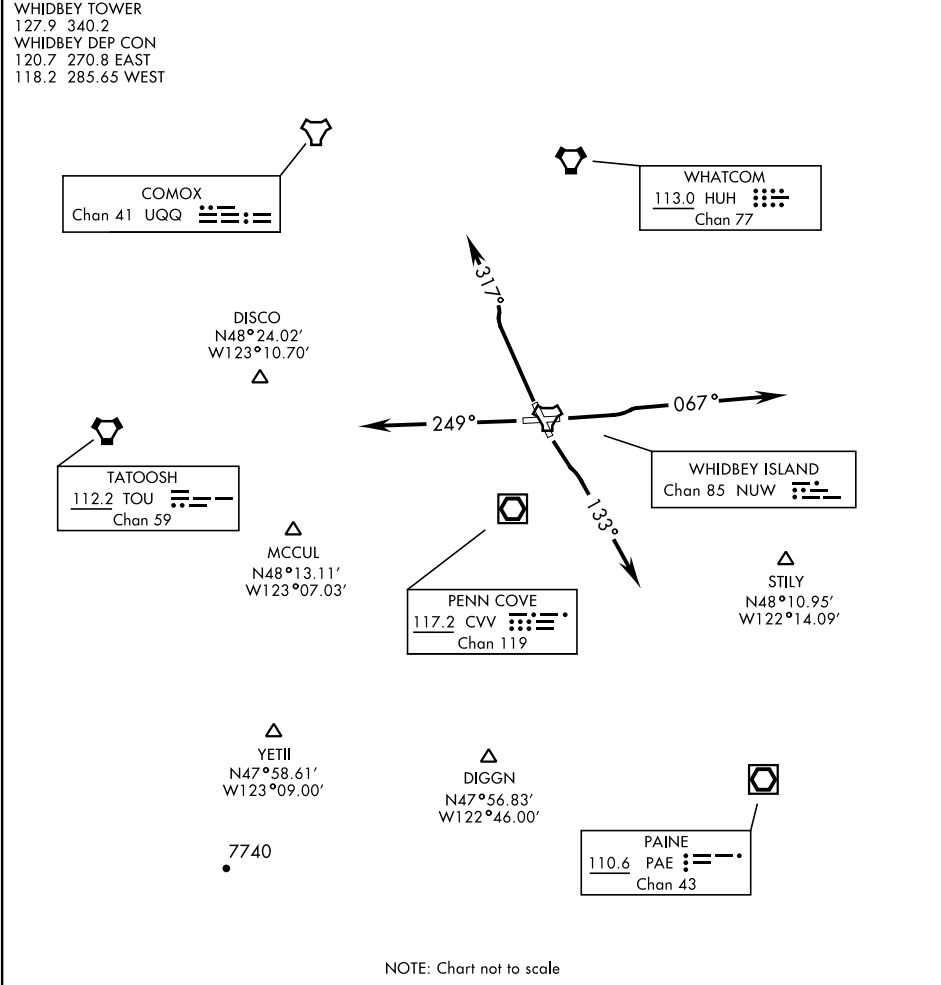
ATIS 134.15 281.5
CLNC DEL
135.1 379.9
GND CON
121.75 336.4
WHIDBEY TOWER
127.9 340.2
WHIDBEY DEP CON
120.7 270.8 EAST
118.2 285.65 WEST

[USN]

Rwy	Knots	60	120	180	240	300	360
7	V/V(fpm)	270	540	810	1080	1350	1620
14	V/V(fpm)	254	508	762	1016	1270	1524

Minimum Climb Rate to 500

OAK HARBOR, WASHINGTON



DEPARTURE ROUTE DESCRIPTION

All RWYS: If control instructions are not received by 10 DME of NUW TACAN, climb to 3000, intercept the NUW 11 DME ARC to join assigned route.

RWY 7: Climb to 2000 via heading 067°, then RADAR vectors to assigned route.

RWY 14: Climbing left turn to 2000 via heading 133°, then RADAR vectors to assigned route.

RWY 25: Climb to 2000 via heading 249°, then RADAR vectors to assigned route.

RWY 32: Climb to 2000 via heading 317°, then RADAR vectors to assigned route.