

OAK HARBOR, WASHINGTON

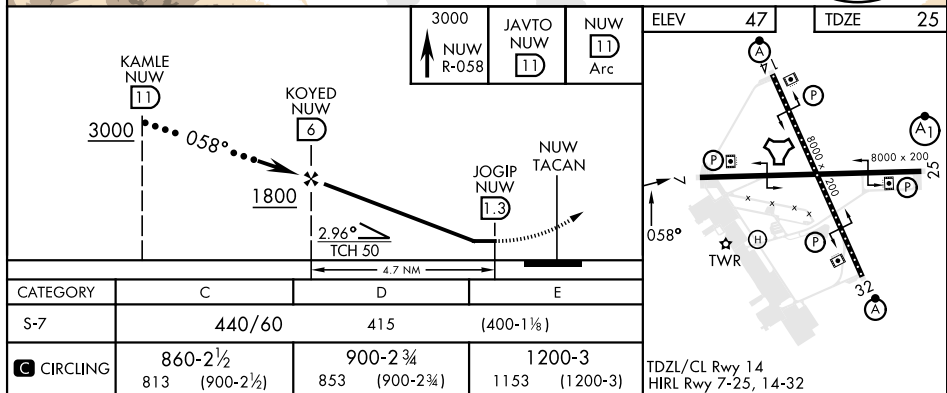
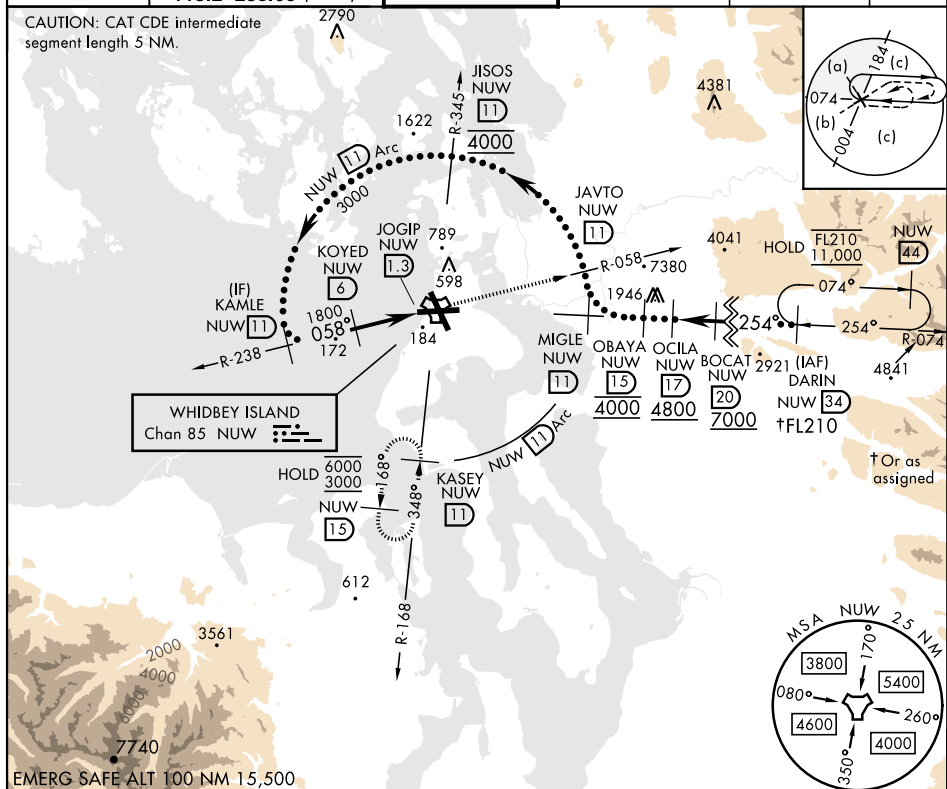
## HI-TACAN Z RWY 7

TACAN	NUW	APCH CRS	Rwy Idg	8000		
Chan	85	058°	TDZE	25	[USN]	WHIDBEY ISLAND NAS (AULT FLD) (KNUW)
			Arpt Elev	47		

**MISSED APPROACH:** Climb to 3000 via NUW TACAN R-058 to JAVTO, then arc SE of NUW via 11 DME Arc to KASEY and hold.

ATIS 134.15 281.5	WHIDBEY APP CON 120.7 270.8 (EAST) 118.2 285.65 (WEST)	WHIDBEY TOWER 127.9 340.2	GND CON 121.75 336.4	CLNC DEL 135.1 379.9	ASR/PAR
----------------------	--	------------------------------	-------------------------	-------------------------	---------

CAUTION: CAT CDE intermediate segment length 5 NM.



OAK HARBOR, WASHINGTON

48°21'N-122°39'W

WHIDBEY ISLAND NAS (AULT FLD) (KNUW)

# HI-TACAN Z RWY 7

NW-1, 10 JUL 2025 to 07 AUG 2025

NW-1, 10 JUL 2025 to 07 AUG 2025