


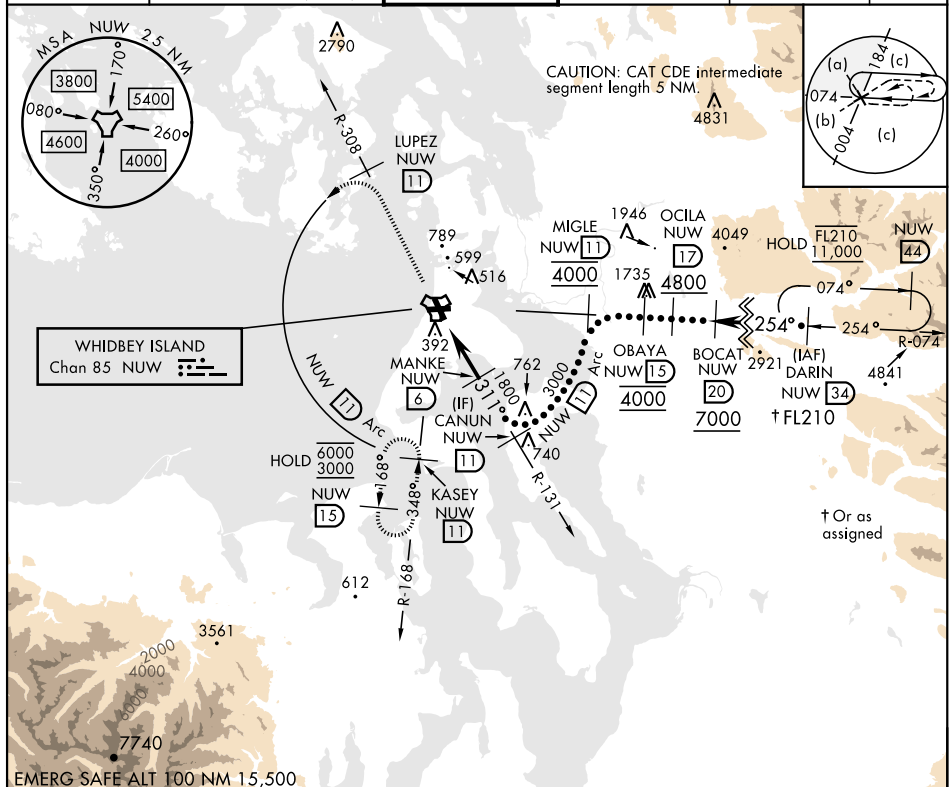


OAK HARBOR, WASHINGTON

HI-TACAN Z RWY 32

TACAN Chan 85	NUW 311°	APCH CRS 311°	Rwy Idg TDZE Arpt Elev	8000 47 47	[USN]	WHIDBEY ISLAND NAS (AULT FLD) (KNUW)
<div>  <p>* When ALS inop, increase CAT CDE vis to 1 3/4 miles.</p> </div>					<div>  <p>ALS-2</p> </div>	<div>  <p>MISSED APPROACH: Climb to 3000 via NUW TACAN R-308 to LUPEZ, then arc W of NUW via 11 DME Arc to KASEY and hold.</p> </div>

ATIS	WHIDBEY APP CON		WHIDBEY TOWER	GND CON	CLNC DEL	ASR/PAR
134.15 281.5	120.7 270.8 (EAST)	118.2 285.65 (WEST)	127.9 340.2	121.75 336.4	135.1 379.9	



CATEGORY	C		D	E
S-32*	680-1 $\frac{3}{4}$		633	(700-1 $\frac{3}{4}$)
C CIRCLING	860-2 $\frac{1}{2}$		1200-3	
	813	(900-2 $\frac{1}{2}$)	853	(900-2 $\frac{3}{4}$)
			1153	(1200-3)

OAK HARBOR, WASHINGTON

48°21'N-122°39'W

WHIDBEY ISLAND NAS (AULT FLD) (KNUW)

Amdt 4 31OCT24

HI-TACAN Z RWY 32

NW-1, 10 JUL 2025 to 07 AUG 2025

NW-1, 10 JUL 2025 to 07 AUG 2025