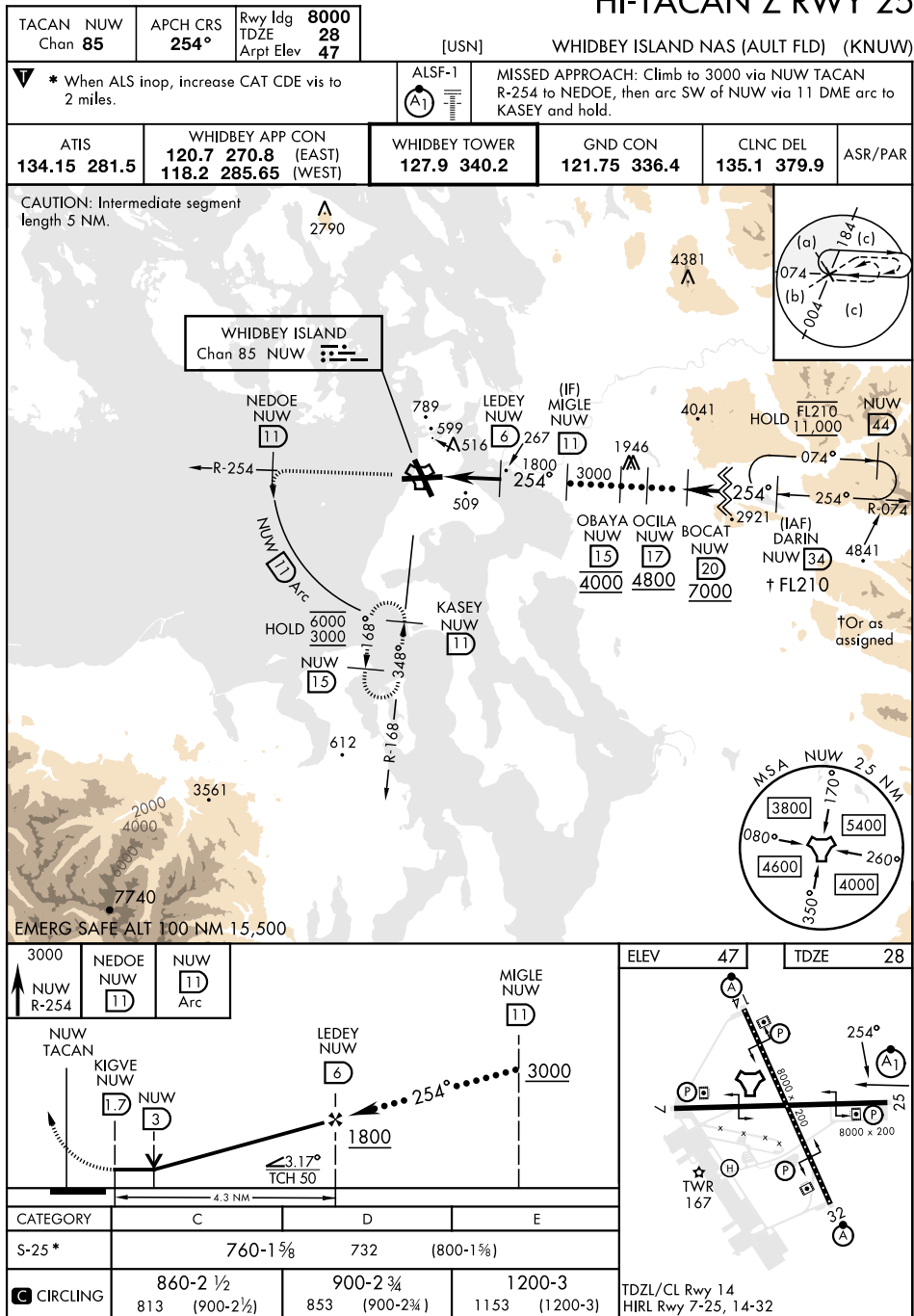


OAK HARBOR, WASHINGTON

HI-TACAN Z RWY 25



OAK HARBOR, WASHINGTON

48° 21' N-122° 39' W

WHIDBEY ISLAND NAS (AULT FLD) (KNUW)

HI-TACAN Z RWY 25

NW-1, 10 JUL 2025 to 07 AUG 2025

NW-1, 10 JUL 2025 to 07 AUG 2025