


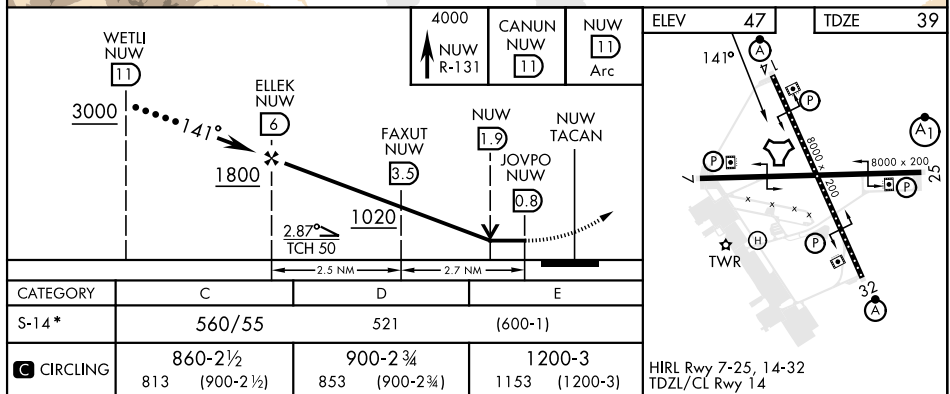
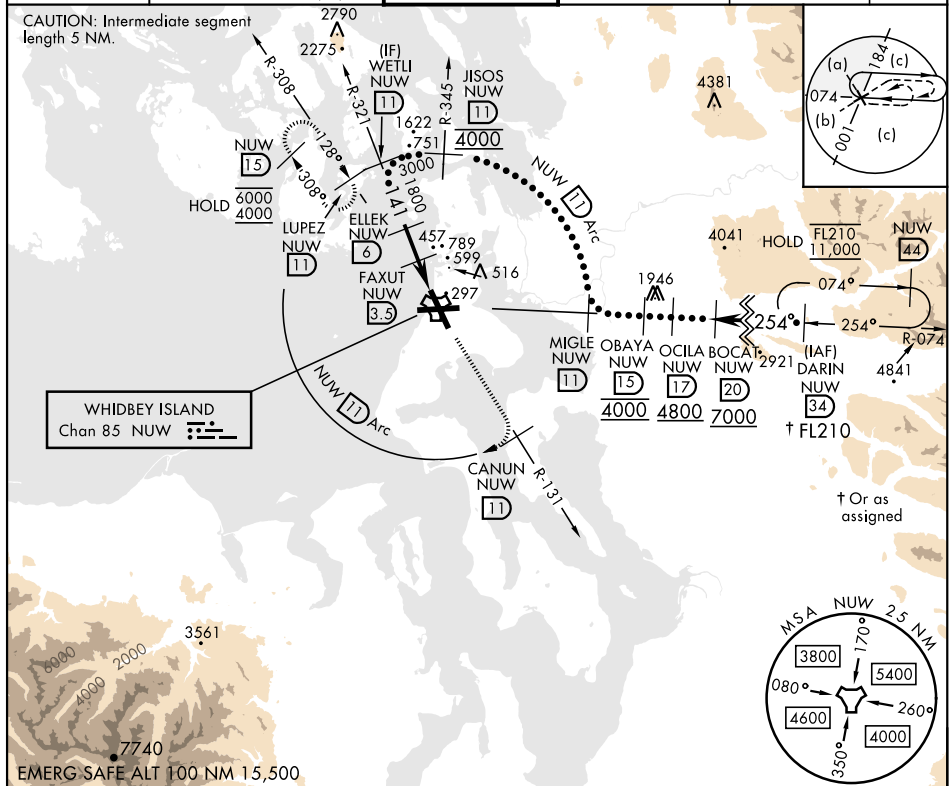
OAK HARBOR, WASHINGTON

HI-TACAN Z RWY 14

TACAN Chan 85	NUW 141°	APCH CRS 141°	Rwy Idg TDZE Arpt Elev	8000 39 47	[USN]	WHIDBEY ISLAND NAS (AULT FLD) (KNUW)
<p>▼ *When ALS inop, increase vis to 1½ miles.</p>			<p>ALSF-2</p> 		<p>MISSED APPROACH: Climb to 4000 via NUW TACAN R-131 to CANUN, then arc SW of NUW TACAN via 11 DME Arc to LUPEZ and hold.</p>	

ATIS	WHIDBEY APP CON	WHIDBEY TOWER	GND CON	CLNC DEL	ASR/PAR
134.15 281.5	120.7 270.8 (E) 118.2 285.65 (W)	127.9 340.2	121.75 336.4	135.1 379.9	

CAUTION: Intermediate segment length 5 NM.



OAK HARBOR, WASHINGTON

48°21'N-122°39'W

WHIDBEY ISLAND NAS (AULT FLD) (KNUW)

Amdt 4 31 OCT 24

HI-TACAN Z RWY 14

NW-1, 10 JUL 2025 to 07 AUG 2025