

APP CRS	Rwy Idg	6004
163°	TDZE	471
	Apt Elev	491

RNAV (GPS) RWY 16
NEW YORK STEWART INTL (SWF)

RNP APCH-GPS.

T	Rwy 16 helicopter visibility reduction below $\frac{3}{4}$ SM NA.
A	Procedure NA when restricted area R-5206 is active.

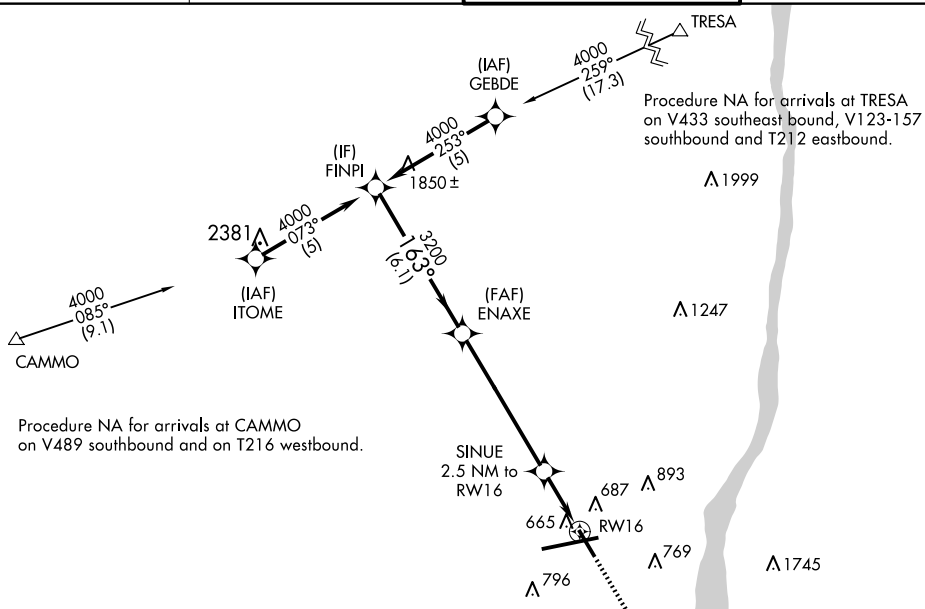
MISSED APPROACH: Climb to 4000
direct MEPTD and hold, continue
climb-in-hold to 4000.

ATIS
124,575

NEW YORK APP CON
132.75 363.1

STEWART TOWER
121.0 254.4

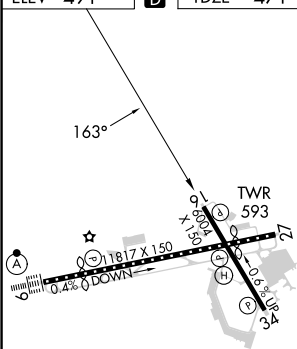
GND CON
121.9



Procedure NA for arrivals at CAMMO
on V489 southbound and on T216 westbound.

Procedure NA for arrivals at TRESA
on V433 southeast bound, V123-157
southbound and T212 eastbound.

ELEV 491		TDZE 471
----------	---	----------



TDZ/CL Rwy 9
HIRL Rwy 9-27 and 16-34
REIL Rwy 16, 27 and 34

Diagram illustrating the MDA (Minimum Descent Altitude) for a circling approach. The diagram shows a descent path from 4000 ft to 3200 ft (ENAXE) at a 1.63° angle, then a 3.07° descent to 1320 ft (RW16) at a 3.07° angle. The distance from ENAXE to RW16 is 5.8 NM. The distance from the start of the descent to ENAXE is 6.1 NM. The distance from the start of the descent to RW16 is 6.1 NM + 5.8 NM = 11.9 NM. The diagram also shows a 2 NM segment from RW16 to the final descent point. The diagram is labeled 'FINPI', 'VGSI and descent angles not coincident (VGSI Angle 3.00/TCH 53)', 'SINUE 2.5 NM to RW16', '2 NM to RW16', 'RW16', 'MEPTE', and '4000'.

CATEGORY	A	B	C	D
RNAV MDA	1140-1	669 (700-1)	1140-1 $\frac{7}{8}$	669 (700-1 $\frac{7}{8}$)
C CIRCLING	1200-1	709 (800-1)	1200-2 709 (800-2)	1200-2 $\frac{1}{4}$ 709 (800-2 $\frac{1}{4}$)

NEW YORK, NEW YORK

Amdt 1F 19MAY22

41°30'N-74°06'W

NEW YORK STEWART INTL (SWF)
RNAV (GPS) RWY 16