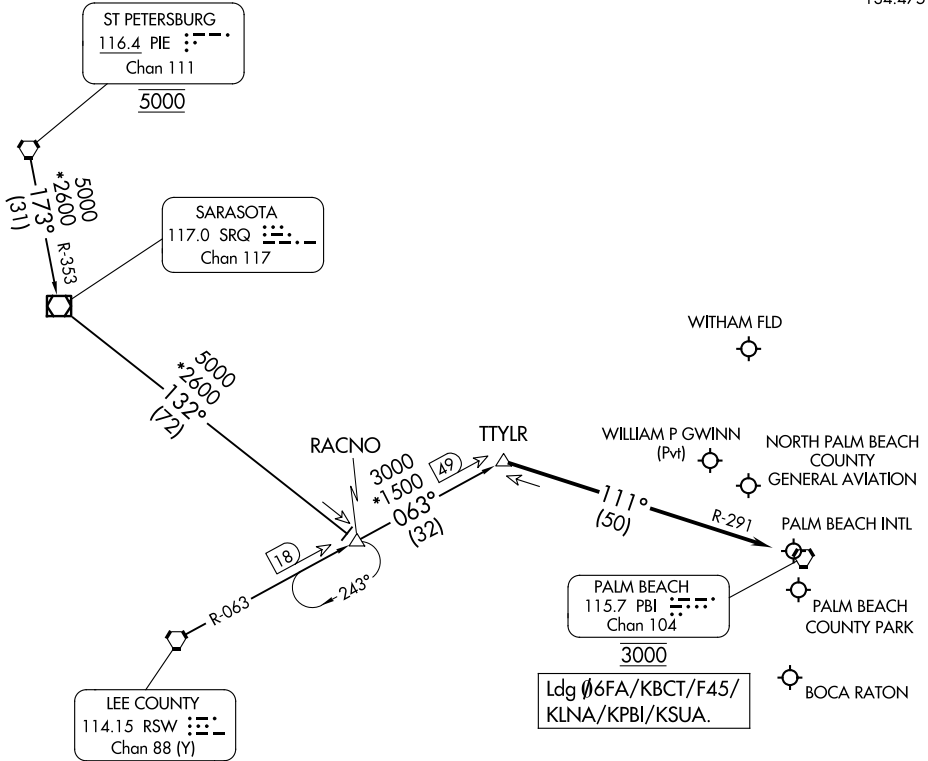


RADAR required. DME required.

PALM BEACH APP CON
125.2 317.4
PBI D-ATIS
123.75
SUA ATIS
134.475

SE-3, 10 JUL 2025 to 07 AUG 2025



NOTE: Chart not to scale.

ARRIVAL ROUTE DESCRIPTION

RACNO TRANSITION (RACNO.TTYLR4): From over RACNO on RSW R-063 to TTYLR, thence. . . .

ST PETERSBURG TRANSITION (PIE.TTYLR4): From over PIE VORTAC on PIE R-173 and SRQ R-353 to SRQ VOR/DME, then on SRQ R-132 to RACNO, then on RSW R-063 to TTYLR, thence. . . .

LANDING ALL AIRPORTS: From TTYLR on PALM BEACH (PBI) R-291 to cross PBI VORTAC at 3000. Expect RADAR vectors.

SE-3, 10 JUL 2025 to 07 AUG 2025