

WAAS
CH **45518**
W28A

APP CRS
279°

Rwy Ldg
TDZE **18**
Apt Elev **20**

RNAV (GPS) Y RWY 28R

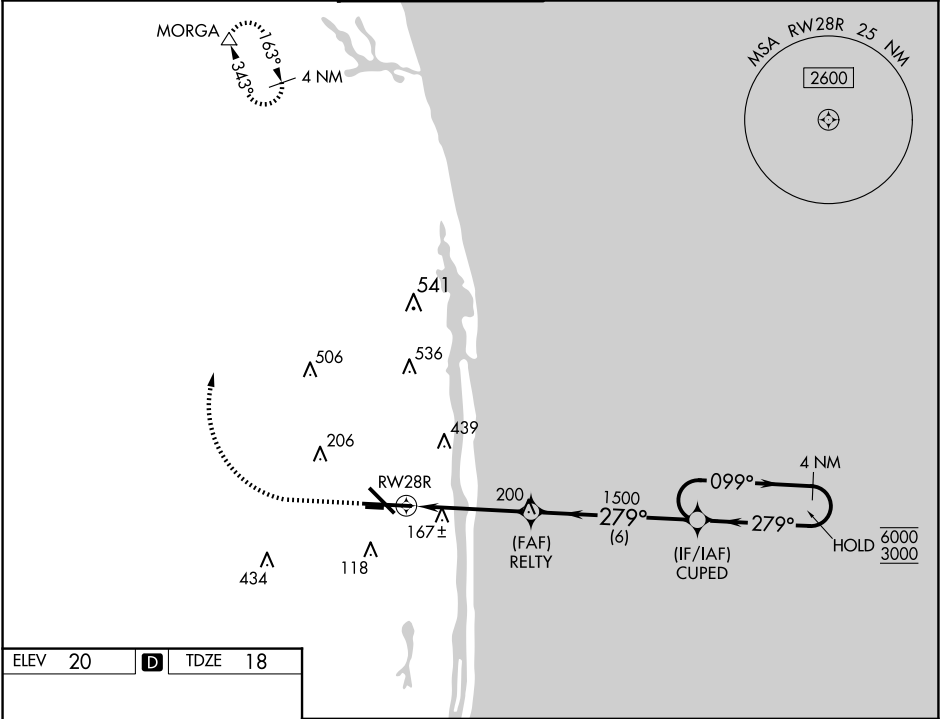
PALM BEACH INTL (PBI)

RNP APCH - GPS.

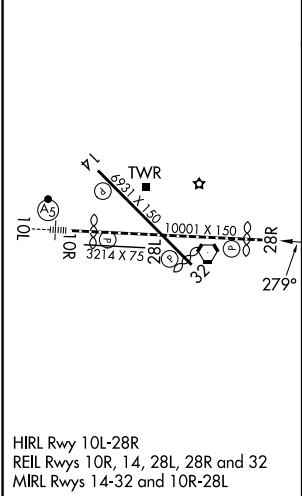
▼ For uncompensated Baro-VNAV systems, procedure NA below 6°C or above 54°C.

MISSED APPROACH: Climb to 500 then climbing right turn to 3000 direct MORG A and hold.

D-ATIS 123.75	PALM BEACH APP CON 128.3 317.4	PALM BEACH TOWER 119.1 257.8	GND CON 121.9 284.6	CLNC DEL 121.6 284.6	CPDLC
-------------------------	--	--	-------------------------------	--------------------------------	-------



ELEV 20	D	TDZE 18
---------	----------	---------



500	3000	MORG A	VGSI and RNAV glidepath not coincident (VGSI Angle 3.00/TCH 70).	4 NM Holding Pattern
↑	↪	△		
<p>The detailed approach path diagram shows the glidepath, holding pattern, and various navigational aids and terrain features. The path starts at 1.2 NM to RW28R, then turns right to 279° at 1500 feet, passing through RELTY and CUPED. The path continues to 3000 feet, then turns right to 099° and holds at 6000 feet. The chart also shows the MSA RW28R 25 NM (2600) and various terrain features (e.g., 541, 506, 536, 439, 206, 167±, 118, 434, 200). The chart is labeled with ELEV 20 and TDZE 18.</p>				
CATEGORY	A	B	C	D
LPV DA	218/40	200 (200-¾)		
LNAV/VNAV DA	342/50	324 (400-1)		
LNAV MDA	460/55	442 (500-1)	460-1⅓	442 (500-1⅓)
C CIRCLING	560-1	540 (600-1)	740-2 720 (800-2)	780-2½ 760 (800-2½)