

APP CRS
099°

Rwy Ldg
TDZE **16**
Apt Elev **20**

RNAV (RNP) Z RWY 10L
PALM BEACH INTL (PBI)

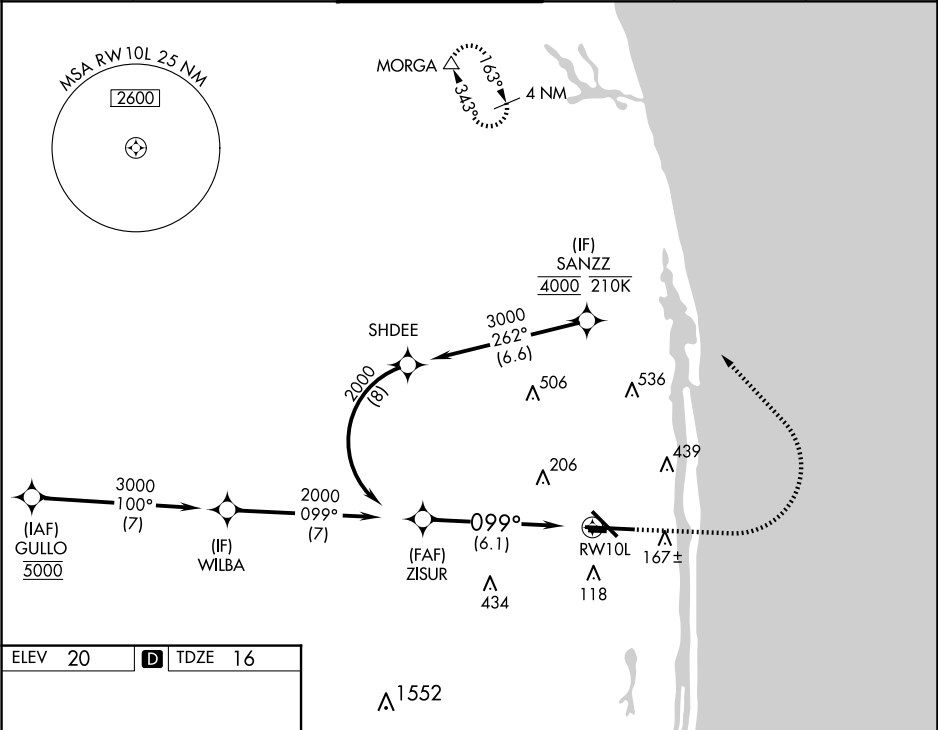
RNP AR APCH - GPS.

For uncompensated Baro-VNAV systems, procedure NA below 6°C or above 54°C.

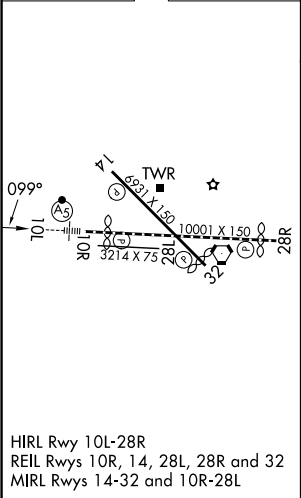
MALSR

MISSED APPROACH: Climb to 1000 then climbing left turn to 3000 direct MORGA and hold.

D-ATIS 123.75	PALM BEACH APP CON 128.3 317.4	PALM BEACH TOWER 119.1 257.8	GND CON 121.9 284.6	CLNC DEL 121.6 284.6	CPDLC
-------------------------	--	--	-------------------------------	--------------------------------	-------



ELEV 20	D	TDZE 16
---------	----------	---------



VGSI and RNAV glidepath not coincident (VGSI Angle 3.00/TCH 68).

1000 3000 MORGA

ZISUR 2000

2000 099°

GP 3.00° TCH 52

See planview for multiple IF locations.

6.1 NM

RWY 10L

CATEGORY	A	B	C	D
RNP 0.30 DA	355/26 339 (400-½)			

AUTHORIZATION REQUIRED