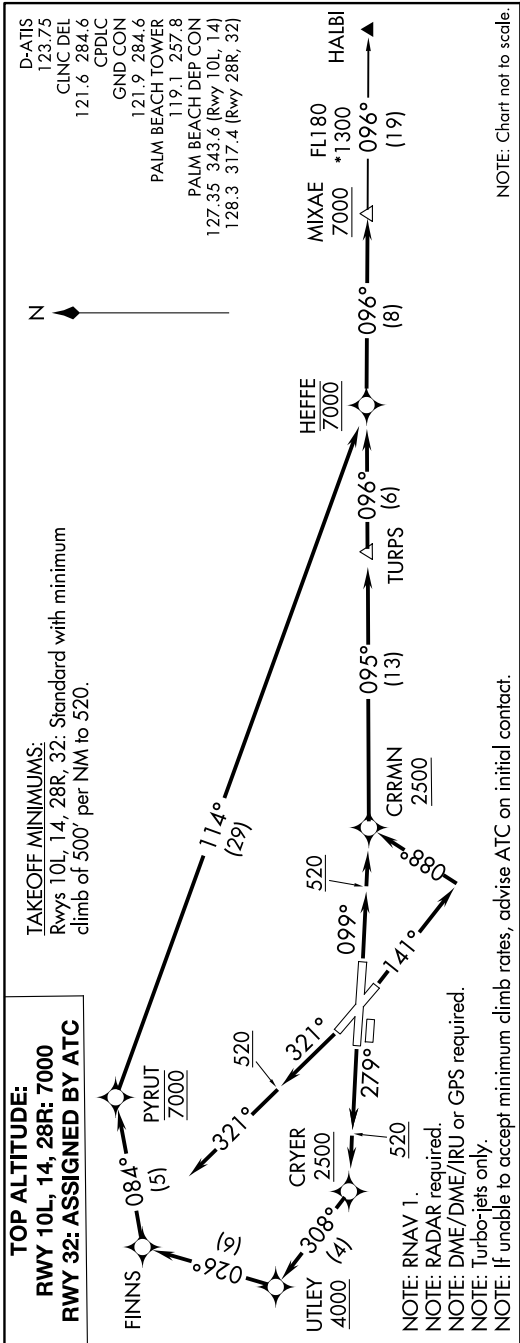


## MIXAE THREE DEPARTURE (RNAV)



DEPARTURE ROUTE DESCRIPTION

**TAKEOFF RUNWAY 10L:** Climb on heading 099° to 520, then direct to cross CRRMN at or above 2500, then on track 095° to TURPS, then on track 096° to cross HEFFE at and maintain 7000, thence. . . . .

**TAKEOFF RUNWAY 14:** Climb on heading 141° to intercept course 088° to cross CRRMN at or above 2500, then on track 095° to TURPS, then on track 096° to cross HEFFE at and maintain 7000, thence. . . . .

**TAKEOFF RUNWAY 28R:** Climb on heading 279° to 520, then direct to cross CRYER at or above 2500, then on track 308° to cross TUTLEY at or above 4000, then on track 026° to FINNS then on track 084° to cross PYRUT at 7000, then on track 114° to cross

... on track 098° to cross MIXAE at or above 7000, then on transition. Expect clearance to filed altitude within 10 minutes after departure.

TAKEOFF RUNWAY 32: Climb on heading 321° to 520, then on heading 321° or assigned by ATC for vectors to cross HEFFE at 7000, thence. . . .  
 . . . . . on track 096° to cross MIXAE at or above 7000, then on transition. Maintain ATC assigned altitude, expect clearance to filed altitude within 10 minutes after departure.

HALBI TRANSITION (MIXAE3.HALBI)