
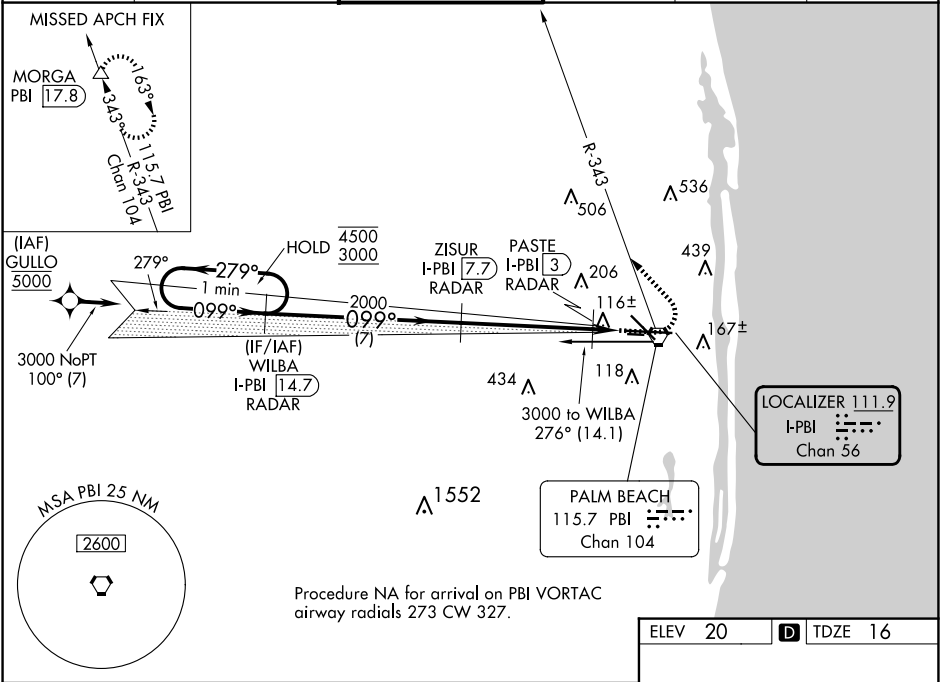


ILS/DME I-PBI 111.9 Chan 56	APP CRS 099°	Rwy Ldg 8151 TDZE 16 Apt Elev 20	ILS or LOC RWY 10L PALM BEACH INTL (PBI)	
---	------------------------	---	---	--

DME required. RNP APCH-GPS. From GULLO.		<div>MALSR</div> <div></div>	<div>MISSED APPROACH: Climb to 1000 then climbing left turn to 3000 on heading 323° and PBI VORTAC R-343 to MORGA/PBI 17.8 DME and hold.</div>
<div><div><div>T</div><div>A</div></div></div> <div><div>For inop ALS, increase S-LOC 10L Cat C/D visibility to RVR 5500.</div><div>* RVR 1800 authorized with use of FD or AP or HUD to DA.</div></div>			

D-ATIS 123.75	PALM BEACH APP CON 128.3 317.4	PALM BEACH TOWER 119.1 257.8	GND CON 121.9 284.6	CLNC DEL 121.6 284.6	CPDLC
-------------------------	--	--	-------------------------------	--------------------------------	-------



VGSI and ILS glidepath not coincident (VGSI Angle 3.00/TCH 68).		1000	3000	PBI	MORGA
One Minute Holding Pattern		↑	hdg 323°	△	△
WILBA I-PBI 14.7 RADAR		ZISUR I-PBI 7.7 RADAR	PASTE I-PBI 3 RADAR	I-PBI 1.6	
4500 ← 279°		3000 → 099°	2000	500	
GS 3.00° TCH 52		7 NM	4.7 NM	1.4 NM	
CATEGORY	A	B	C	D	
S-ILS 10L *	216/24 200 (200-½)				
S-LOC 10L	380/24	364 (400-½)	380/35	364 (400-⅝)	
CIRCLING	560-1	540 (600-1)	740-2 720 (800-2)	780-2½ 760 (800-2½)	

HIRL Rwy 10L-28R
REIL Rwy 10R, 14, 28L, 28R and 32
MIRL Rwy 14-32 and 10R-28L