

APCH CRS	Rwy Idg	11,597
228°	TDZE	241
	Arprt Elev	241

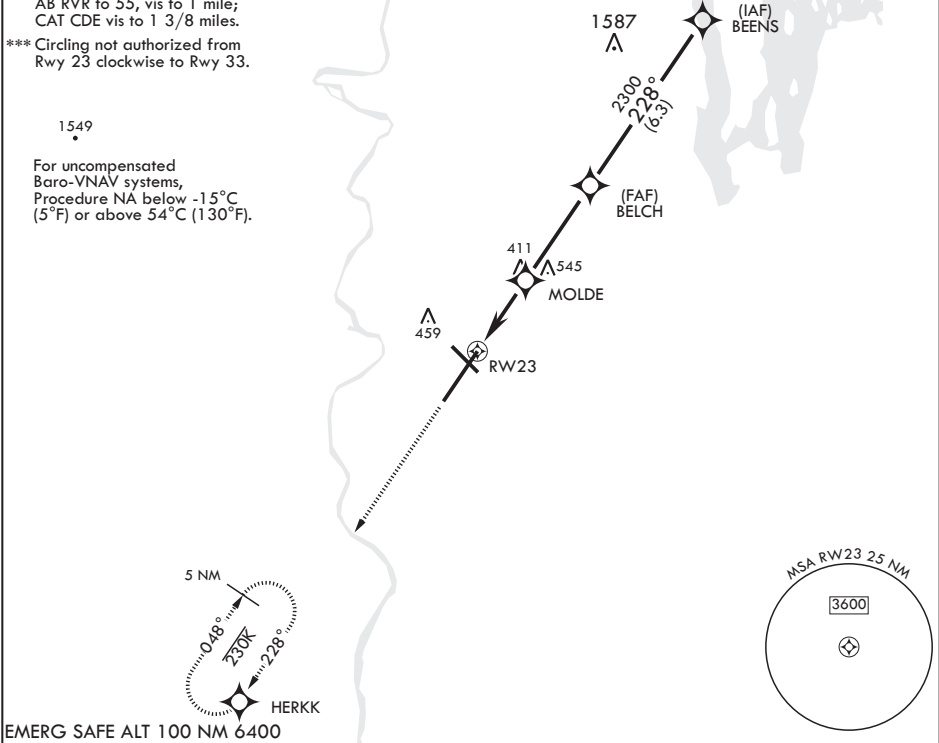
AL-447 (USAF)

WESTOVER ARB METROPOLITAN (KCEF)

RNP APCH.	ALSF-1	MISSED APPROACH: Climb to 1000, then climbing left turn to 3000 direct HERKK and hold.
DME/DME RNP-0.3 NA.		
* When ALS inop, increase vis to 1 3/8 miles.		

ATIS★ 127.525	BRADLEY APP CON/DEP CON 125.35 281.5	TOWER★ 134.85 (CTAF) 348.75	GND CON 118.35 275.8
------------------	---	--------------------------------	-------------------------

** When ALS inop, increase CAT
AB RVR to 55, vis to 1 mile;
CAT CDE vis to 1 3/8 miles.
*** Circling not authorized from
Rwy 23 clockwise to Rwy 33.



VGSI and RNAV glidepath not coincident (VGSI angle 3.00/TCH 64)

ELEV 241

Rwy 5 Idg 10,395'

TDZE 241

CATEGORY	A	B	C	D	E
LNAV/VNAV DA*	760/55		519	(600-1)	
LNAV MDA**	760/24	519 (600-½)	760/55	519	(600-1)
CIRCLING***	760-1 519 (600-1)	780-1 539 (600-1)	840-1½ 599 (600-1½)	1060-2¾ 819 (900-2¾)	1080-3 839 (900-3)

NE-1, 10 JUL 2025 to 07 AUG 2025

NE-1, 10 JUL 2025 to 07 AUG 2025