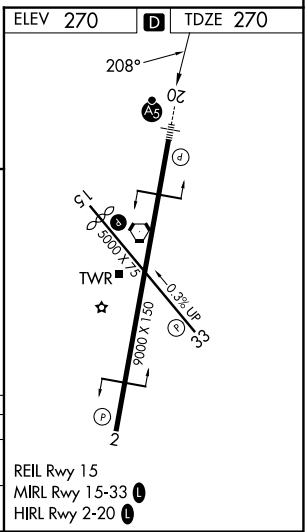
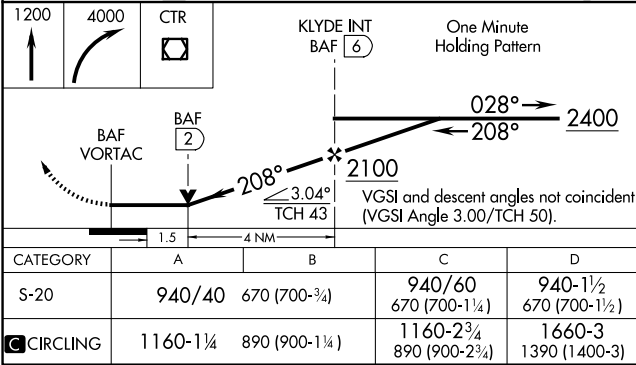
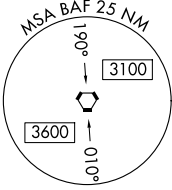
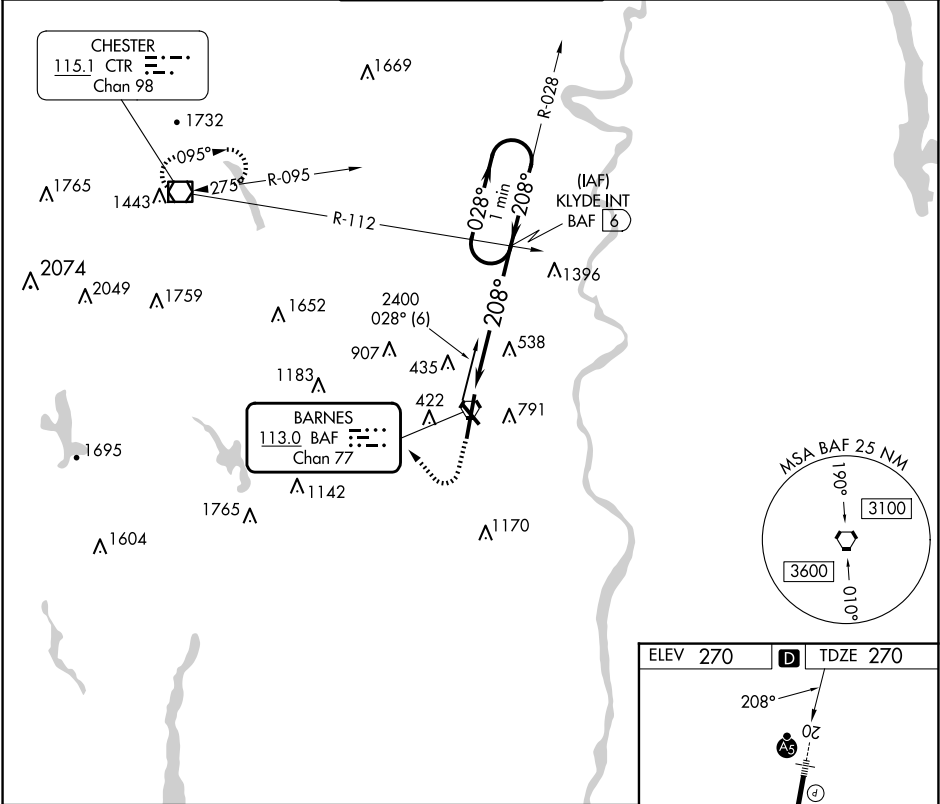


BAF VORTAC	APP CRS	Rwy Ldg
113.0	208°	8919
Chan 77	TDZE	270
	Apt Elev	270

VOR RWY 20
WESTFIELD-BARNES RGNL (BAF')

 -20°C	For inoperative MALSR, increase Cat A/B visibility to RVR 5000. Night landing: Rwy 15 NA.	MALSR 	MISSED APPROACH: Climb to 1200, then climbing right turn to 4000 direct CTR VOR/DME and hold, continue climb in hold to 4000.
-----------	---	-----------	---

ATIS 127.1 263.15	BRADLEY APP CON 125.35 281.5	WESTFIELD TOWER ★ 125.075 (CTAF) 251.1	GND CON 121.7 289.4	CLNC DEL 121.7
----------------------	---------------------------------	---	------------------------	-------------------



NE-1, 10 JUL 2025 to 07 AUG 2025

NE-1, 10 JUL 2025 to 07 AUG 2025