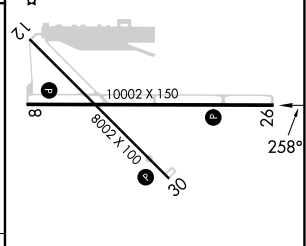
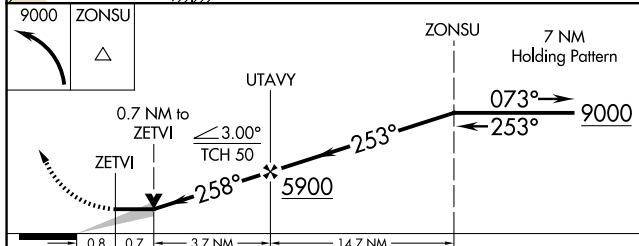
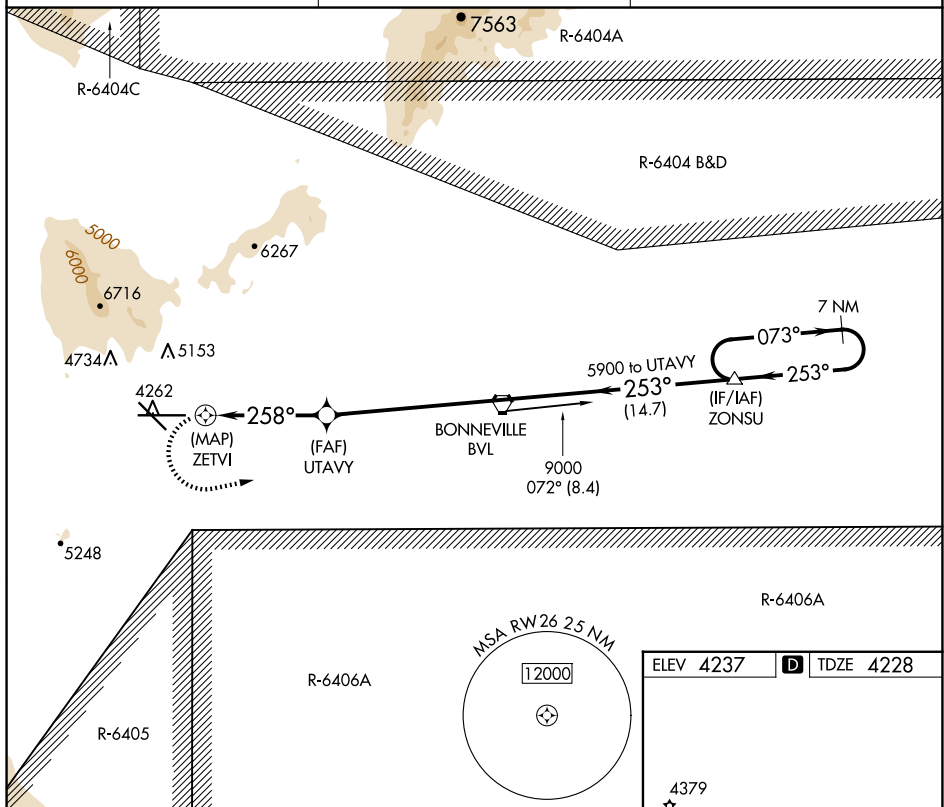



25163

# RNAV (GPS) RWY 26

**MISSED APPROACH:** Climbing left turn to 9000 direct ZONSU and hold, continue climb-in-hold to 9000.

UNICOM  
122.8 (CTAF) **L**

CATEGORY	A	B	C	D	E
INAV MDA	4740-1	512 (600-1)	4740-1 <sup>3</sup> / <sub>4</sub> 512 (600-1 <sup>3</sup> / <sub>4</sub> )		
 CIRCLING	4740-1 <sup>1</sup> / <sub>4</sub>	503 (600-1 <sup>1</sup> / <sub>4</sub> )	4860-1 <sup>3</sup> / <sub>4</sub> 623 (700-1 <sup>3</sup> / <sub>4</sub> )	5080-2 <sup>3</sup> / <sub>4</sub> 843 (900-2 <sup>3</sup> / <sub>4</sub> )	5700-3 463 (1500-3)

REIL Rwy 8, 12, 26 and 30 **L**  
MIRL Rwy 8-26 and 12-30 **L**

WENDOVER (ENV)  
RNAV (GPS) RWY 26

SW-4, 10 JUL 2025 to 07 AUG 2025