

WATERTOWN, SOUTH DAKOTA

AL-444 (FAA)

23222

WAAS CH 50305 W30A	APP CRS 299°	Rwy Idg 6898 TDZE 1735 Apt Elev 1749
--	------------------------	---

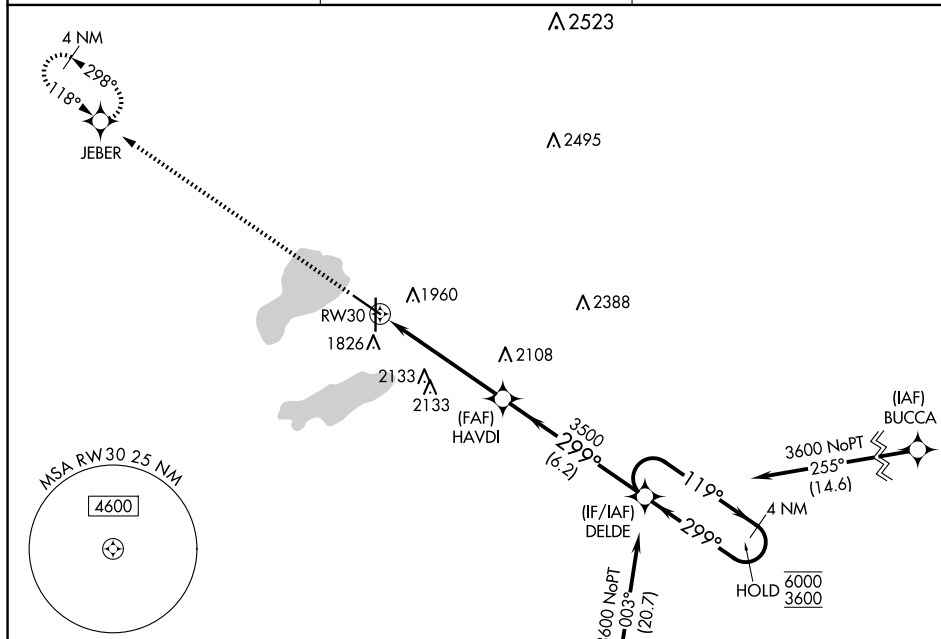
RNAV (GPS) RWY 30
WATERTOWN RGNL (ATY)

RNP APCH - GPS.

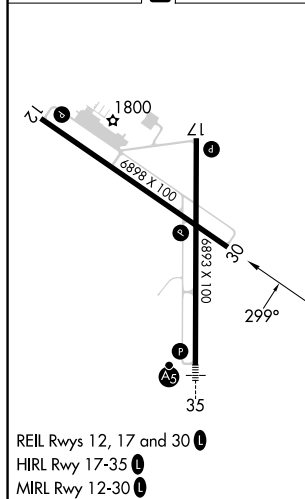
T For uncompensated Baro-VNAV systems, LNAV/VNAV
A NA below -18°C or above 54°C.

MISSED APPROACH: Climb to 3600 direct JEBER and hold.

ASOS 126.625	MINNEAPOLIS CENTER 128.5 306.2	UNICOM 123.05 (CTAF) 0
------------------------	--	----------------------------------



ELEV 1749	D	TDZE 1735
-----------	----------	-----------



WATERTOWN, SOUTH DAKOTA

Amdt 1B 29DEC22

44°55'N-97°09'W

WATERTOWN RGNL (ATY)
RNAV (GPS) RWY 30

NC-1, 10 JUL 2025 to 07 AUG 2025

NC-1, 10 JUL 2025 to 07 AUG 2025