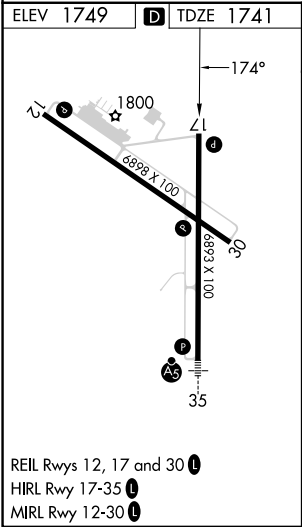
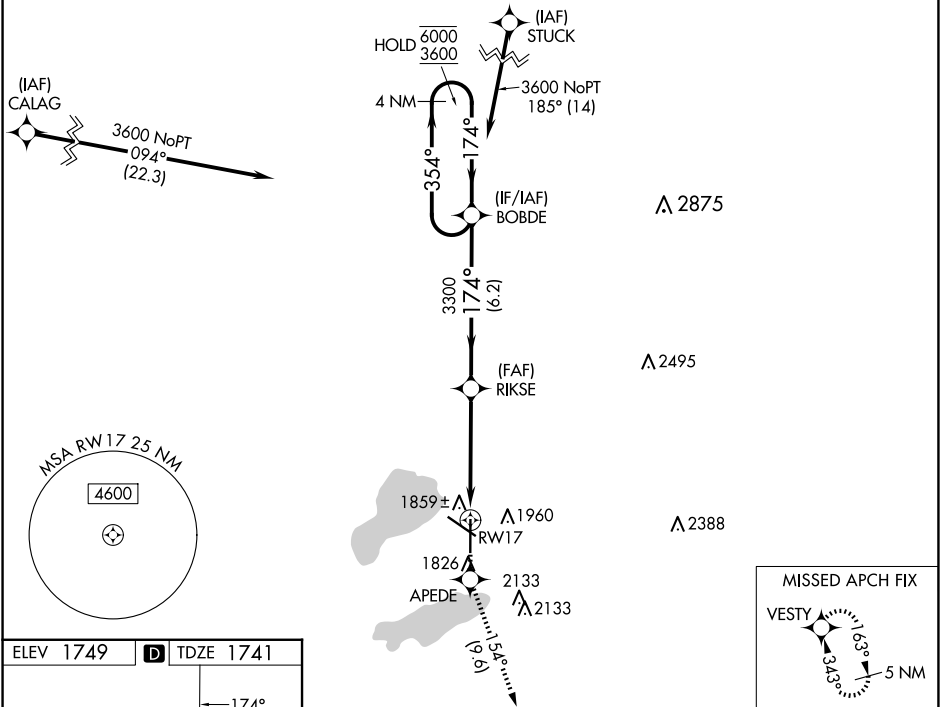


WAAS CH 82305 W17A	APP CRS 174°	Rwy Idg TDZE 1741 Apt Elev 1749	6893 1741 1749
--	------------------------	---	---

RNAV (GPS) RWY 17
WATERTOWN RGNL (ATY)

RNP APCH - GPS.	MISSED APPROACH: Climb to 4000 direct APEDE and on track 154° to VESTY and hold.
For uncompensated Baro-VNAV systems, LNAV/VNAV NA below -18°C or above 54°C.	

ASOS 126.625	MINNEAPOLIS CENTER 128.5 306.2	UNICOM 123.05 (CTAF) 0
------------------------	--	----------------------------------



4000	APEDE	tr 154°	VESTY	VGSI and RNAV glidepath not coincident (VGSI Angle 3.00/TCH 35).
				BOBDE 4 NM Holding Pattern
				354° 6000 3600
				GP 3.00° TCH 45
				3300
				1.1 NM to RW17
				1.1 NM 3.6 NM 6.2 NM
CATEGORY	A	B	C	D
LPV DA	2055-7/8 314 (400-7/8)			
LNAV/VNAV DA	2130-1 1/8 389 (400-1 1/8)			
LNAV MDA	2120-1 379 (400-1)			
CIRCLING	2260-1 511 (600-1)	2500-2 1/4 751 (800-2 1/4)	2500-2 1/2 751 (800-2 1/2)	

NC-1, 10 JUL 2025 to 07 AUG 2025

NC-1, 10 JUL 2025 to 07 AUG 2025