

LOC/DME I-ATY  
**111.9**  
Chan **56**

APP CRS  
**354°**

Rwy Idg **6893**  
TDZE **1745**  
Apt Elev **1749**

ILS or LOC RWY 35  
WATERTOWN RGNL (ATY)

RNAV 1-GPS or RADAR required for procedure entry. DME required.

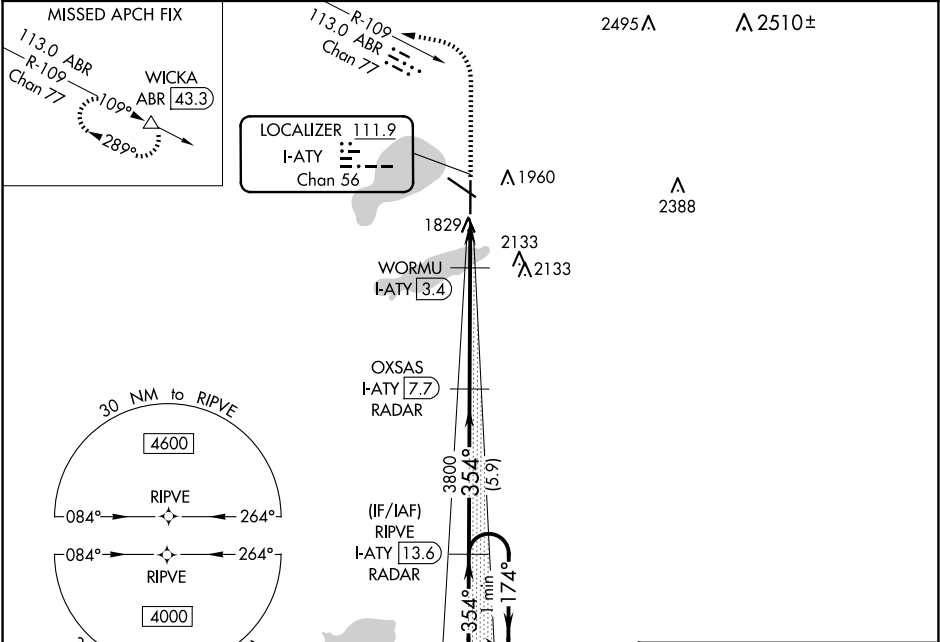
MALSR

MISSED APPROACH: Climb to 3600 then climbing left turn to 4500 on heading 275° and ABR R-109 to WICKA/ABR 43.3 DME and hold.

ASOS  
**126.625**

MINNEAPOLIS CENTER  
**128.5 306.2**

UNICOM  
**123.05 (CTAF) 0**



ELEV 1749

D

TDZE 1745

REIL Rwy 12, 17 and 30 0

HIRL Rwy 17-35 0

MIRL Rwy 12-30 0

