

## TRUPS FIVE ARRIVAL (RNAV) Transition Routes

WASHINGTON, DC

NE-3, 10 JUL 2025 to 07 AUG 2025

POTOMAC APP.CON  
118.675 323.175  
DCA D-ATIS  
132.65  
ADW D-ATIS  
133.675 251.05  
DAA ATIS ★  
128.175

NOTE: Jet aircraft only.

NOTE: Turboprops as assigned by ATC only.

NOTE: PROHIBITED AREA (P-56) 1.5 NM north of KDCA - AVOID - surface to FL180.

NOTE: Landing south at DCA use Runway 19 transition, landing north use Runway

1 transition.

Landing south at ADW use Runway 19R transition. Landing north use Runway

1L transition.

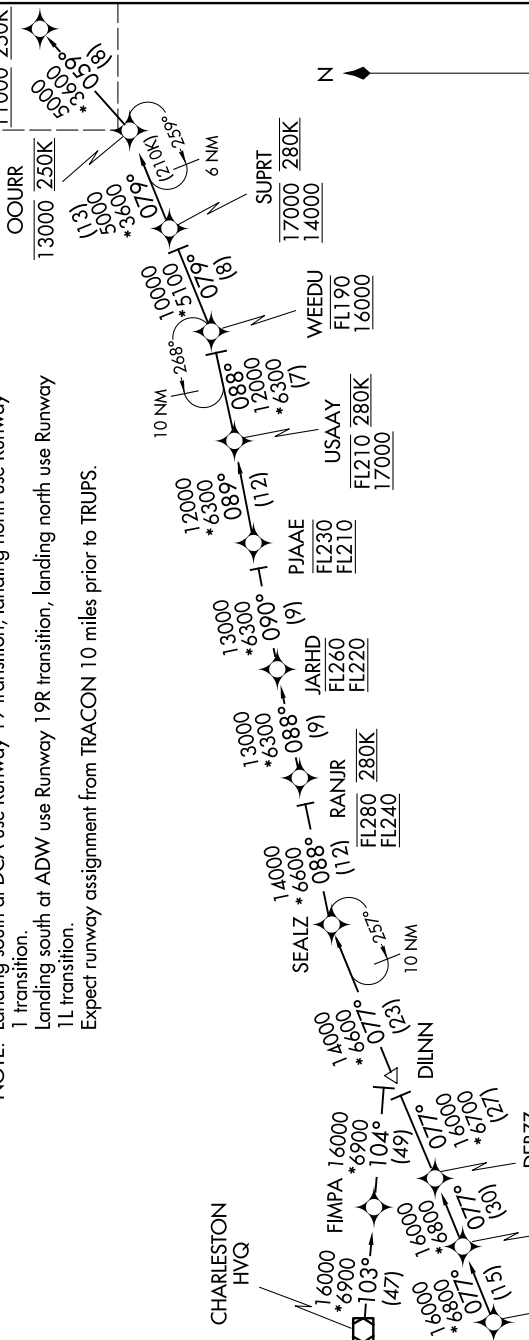
Expect runway assignment from TRACON 10 miles prior to TRUPS.

RNAV 1 - DME/DME/IRU or GPS.
RADAR required.

See following  
page for  
arrival routes.

TRUPS

1000 250K



NOTE: Chart not to scale.

(CONTINUED ON FOLLOWING PAGE)

CHARLESTON TRANSITION (HVQ.TRUPS5):

**SITR TRANSITION (SITR.TRUPS5):**

NE-3, 10 JUL 2025 to 07 AUG 2025

## TRUPS FIVE ARRIVAL (RNAV) Transition Routes

WASHINGTON, DC

(TRUPS.TRUPS5) 16MAY24