


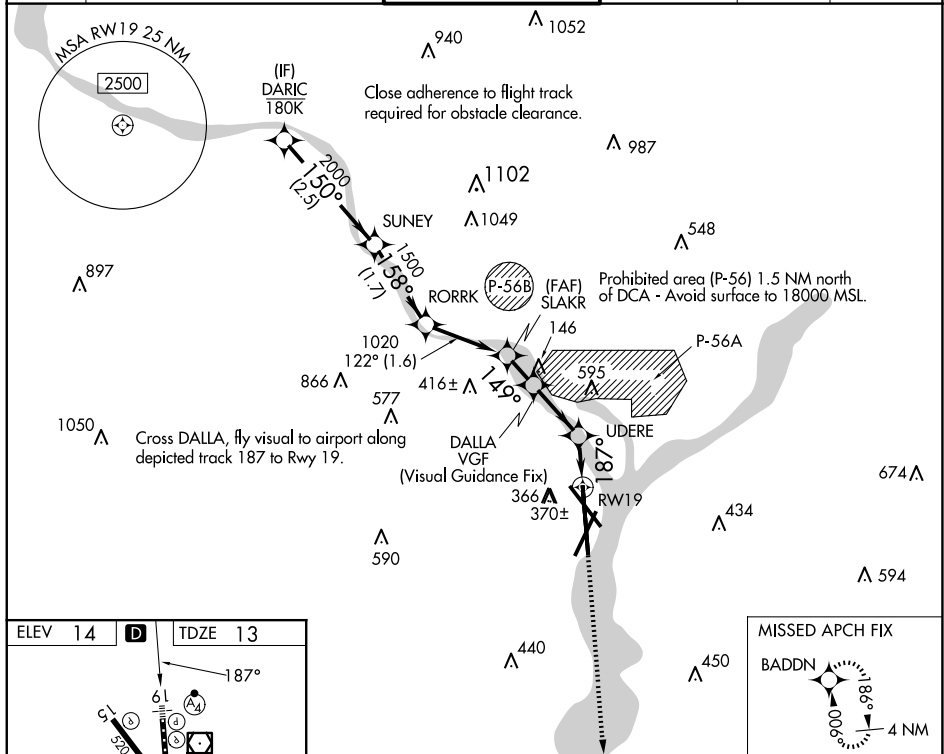


APP CRS 187°	Rwy Ldg 6869 TDZE 13 Apt Elev 14
------------------------	---

RNAV (GPS) Y RWY 19
RONALD REAGAN WASHINGTON NTL (DCA)

RNP APCH - GPS.		MALSF 	MISSED APPROACH: (Do not exceed 165K until Rwy 19) Climb to 3000 on FMS lateral path to Rwy 19, then direct BADDN and hold, continue climb-in-hold to 3000. If unable to follow the FMS lateral path, climb to 3000 and turn to heading 187° direct BADDN and hold, continue climb-in-hold to 3000.				
RADAR required.							
  Rwy 19 helicopter visibility reduction below ¾ SM NA. Inop table does not apply.							
D-ATIS 132.65	POTOMAC APP CON 119.85 239.25 (WEST/SOUTH) 124.2 260.8 (EAST)		WASHINGTON TOWER 119.1 257.6		GND CON 121.7 257.6	CLNC DEL 128.25	CPDLC



3000 ↑	FMS Lateral to RW19	BADDN 	*Check altitude. Turns required in the visual segment.			
CATEGORY	A		B		C	D
LNAV MDA			780-2½		767 (800-2½)	