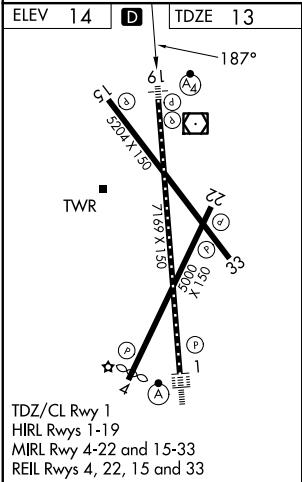
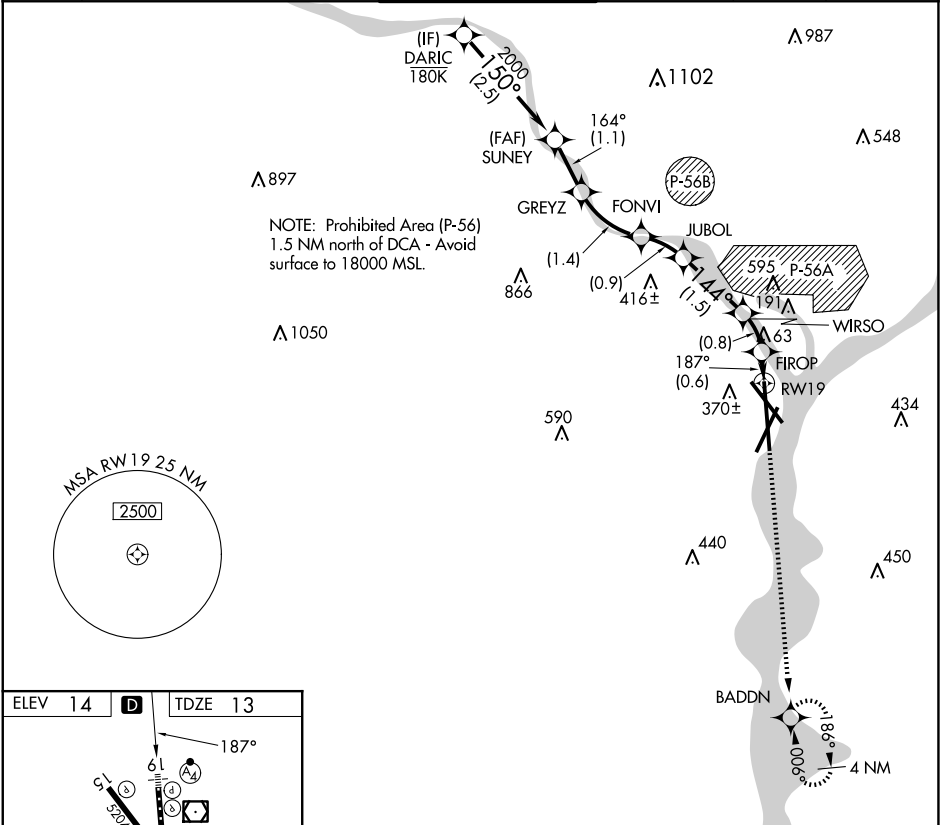


APP CRS	Rwy Ldg	6869
187°	TDZE	13
	Apt Elev	14

RNAV (RNP) Z RWY 19
RONALD REAGAN WASHINGTON NTL (DCA)

RNP AR APCH - GPS.			MALSF	MISSED APPROACH: Climb to 3000 on the final approach track to RW19 then direct BADDN and hold, continue climb-in-hold to 3000.		
Inop table does not apply. For uncompensated Baro-VNAV systems, procedure NA below -8°C or above 54°C.						
D-ATIS	POTOMAC APP CON	WASHINGTON TOWER	GND CON	CLNC DEL	CPDLC	
132.65	119.85 239.25 124.2 360.8 (WEST/SOUTH) (EAST)	119.1 257.6	121.7 257.6	128.25		



DARIC	SUNEY	GREYZ	FONVI	JUBOL	WIRSO	FIROP	Final App tr to RW19	BADDN
2700	2000	1666	1226	954	492	241		
GP 3.00° TCH 50	150°	164°	144°	187°				
2.5 NM 1.1 NM 1.4 NM 0.9 NM 1.5 NM 0.8 0.6 NM								
CATEGORY	A		B		C		D	
RNP 0.11 DA	491/60 478 (500-1¼)							
RNP 0.30 DA	550-1½ 537 (600-1½)							
AUTHORIZATION REQUIRED								