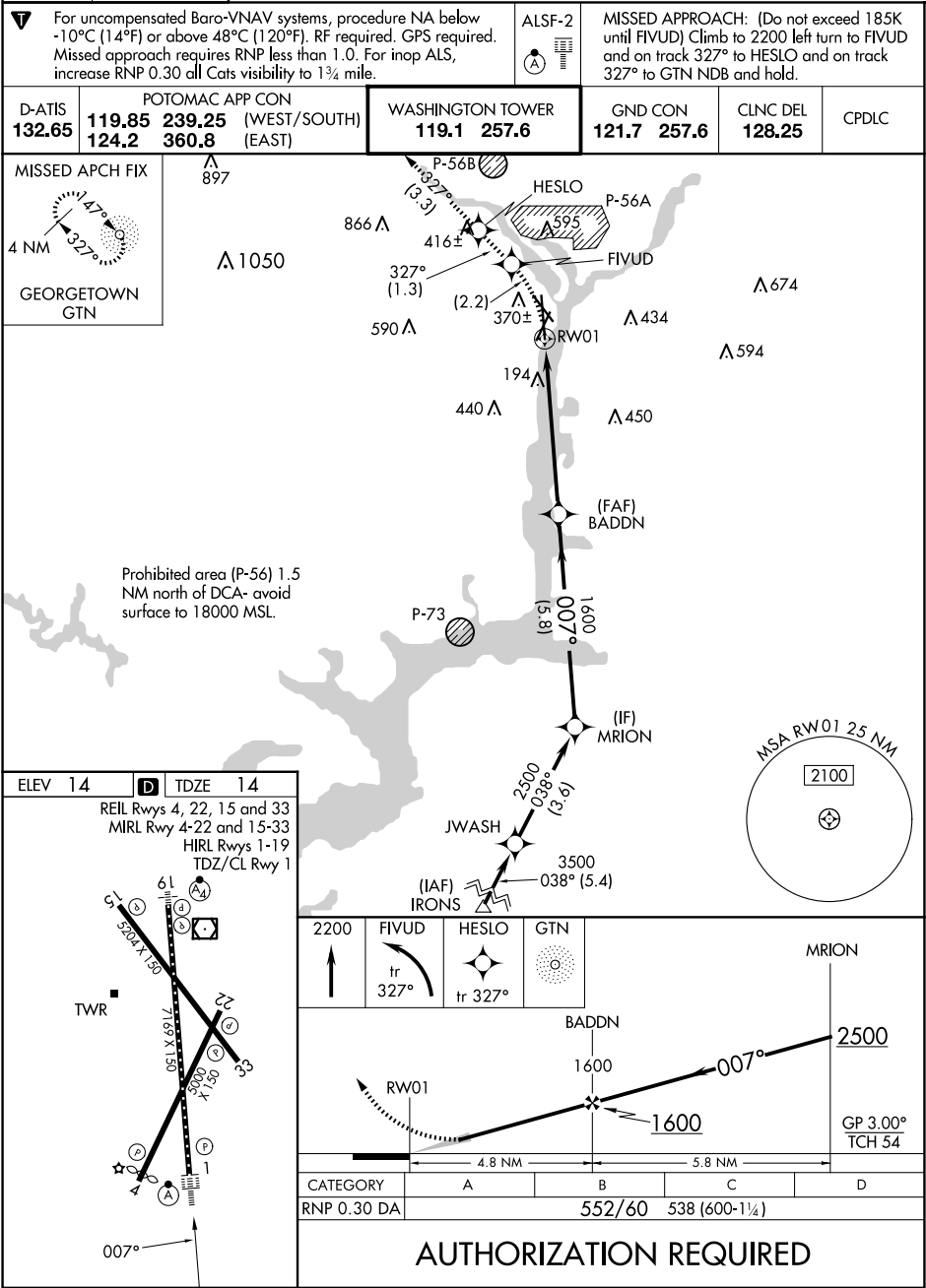


| | | |
|---------|----------|------|
| APP CRS | Rwy Ldg | 6869 |
| 007° | TDZE | 14 |
| | Apt Elev | 14 |

RNAV (RNP) RWY 1
RONALD REAGAN WASHINGTON NTL (DCA)



NE-3, 10 JUL 2025 to 07 AUG 2025

NE-3, 10 JUL 2025 to 07 AUG 2025