

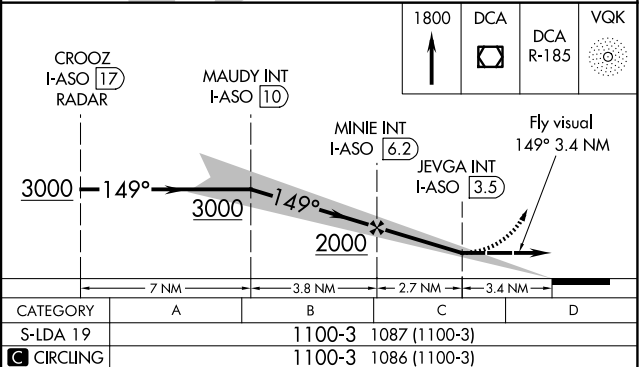
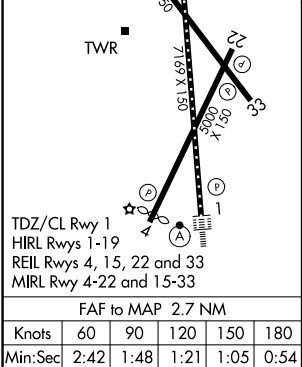
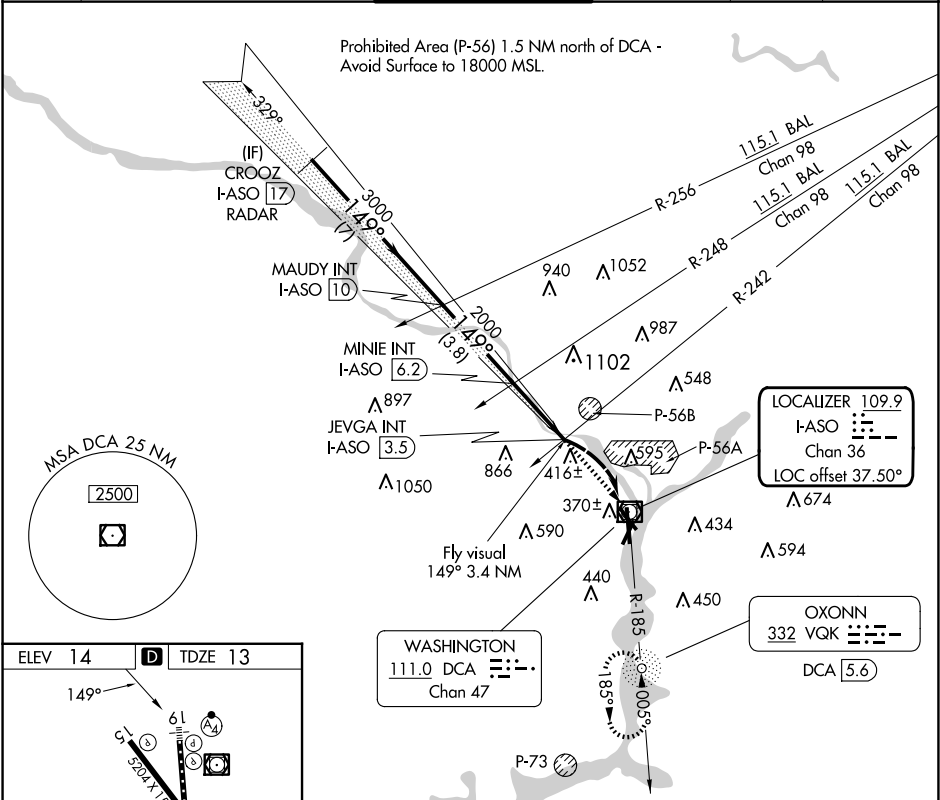


LOC/DME I-ASO	APP CRS	Rwy Ldg	6869
109.9	149°	TDZE	13
Chan 36		Apt Elev	14

LDA Y RWY 19  
RONALD REAGAN WASHINGTON NTL (DCA)

RADAR required for procedure entry. ADF or DME required.		MALSF	MISSED APPROACH: Climb to 1800 direct DCA VOR/DME and on DCA VOR/DME R-185 to OXONN NDB/DCA 5.6 DME and hold.
	Circling NA northeast of Rwy 15-33. Inop table does not apply. Rwy 19 helicopter visibility reduction below 1 SM NA.		

D-ATIS	POTOMAC APP CON	WASHINGTON TOWER	GND CON	CLNC DEL	CPDLC
132.65	119.85 239.25 (WEST/SOUTH)	119.1 257.6	121.7 257.6	128.25	
	124.2 360.8 (EAST)				



NE-3, 10 JUL 2025 to 07 AUG 2025

NE-3, 10 JUL 2025 to 07 AUG 2025