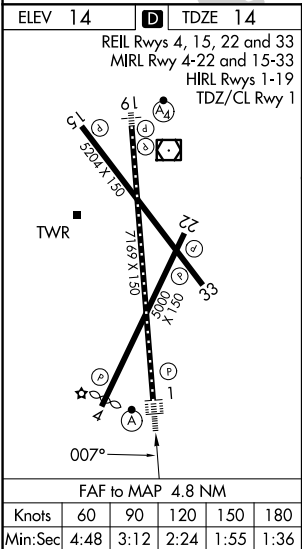
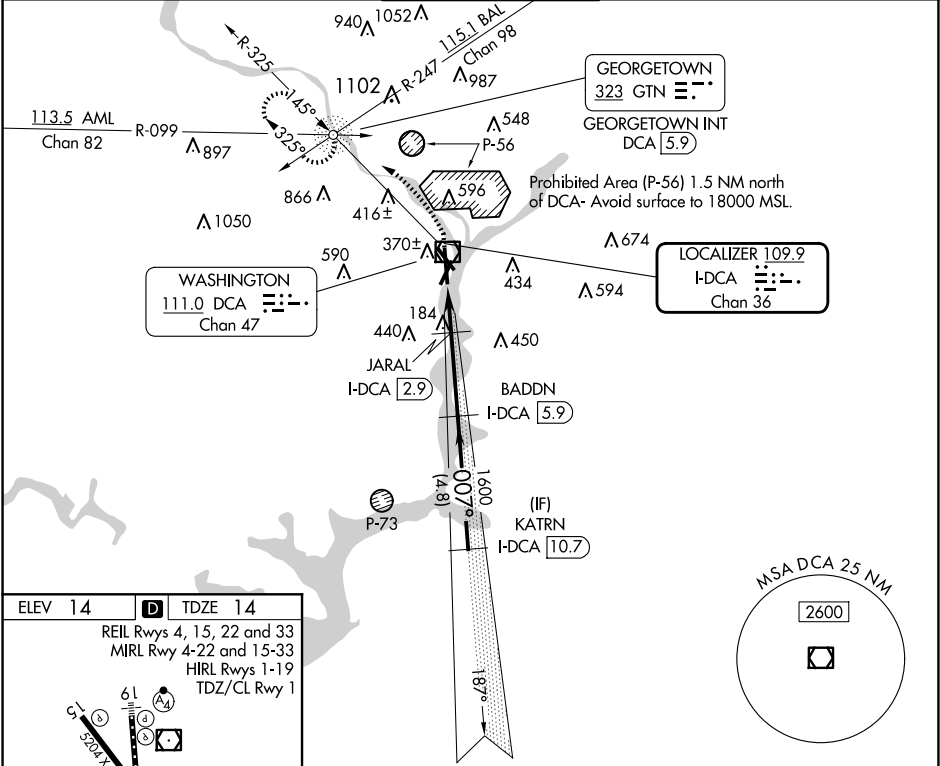


LOC/DME I-DCA	APP CRS	Rwy Ldg	6869
109.9	007°	TDZE	14
Chan 36		Apt Elev	14

ILS or LOC RWY 1
RONALD REAGAN WASHINGTON NTL (DCA)

DME required. RADAR required for procedure entry.				ALSIF-2		MISSED APPROACH: Climb to 420 then climbing left turn to 2200 on DCA VOR/DME R-325 to GTN NDB/INT/DCA 5.9 DME and hold.	
Circling NA northeast of Rwy 15-33. For inop ALS, increase S-LOC 1 Cats C and D visibility to 1 3/8 SM.							
D-ATIS	POTOMAC APP CON	WASHINGTON TOWER		GND CON	CLNC DEL	CPDLC	
132.65	119.85 239.25 (WEST/SOUTH) 124.2 360.8 (EAST)	119.1 257.6		121.7 257.6	128.25		



420 ↑		2200 DCA R-325		GTN 		Use I-DCA DME when on the localizer course.	
						KATR N I-DCA 10.7	
		I-DCA 2.4		JARAL I-DCA 2.9		1600 BADDN I-DCA 5.9	
						007° 2500	
				620		1600	
						GS 3.00° TCH 54	
		1.3 NM		0.5 NM		3 NM	
						4.8 NM	
CATEGORY		A		B		C	
S-ILS 1				214/18		200 (200-½)	
S-LOC 1		480/24		466 (500-½)		480/50	
CIRCLING		720-1		900-¼		900-2¾	
		706 (800-1)		886 (900-1¼)		886 (900-2¾)	
						900-3	
						886 (900-3)	

NE-3, 10 JUL 2025 to 07 AUG 2025

NE-3, 10 JUL 2025 to 07 AUG 2025