

| | | |
|---|------------------------|---|
| LOC/DME I-DCA 109.9 Chan 36 | APP CRS 007° | Rwy Ldg 6869 TDZE 14 Apt Elev 14 |
|---|------------------------|---|

ILS RWY 1 (CAT II)

RONALD REAGAN WASHINGTON NTL (DCA)

DME required. RADAR required for procedure entry.

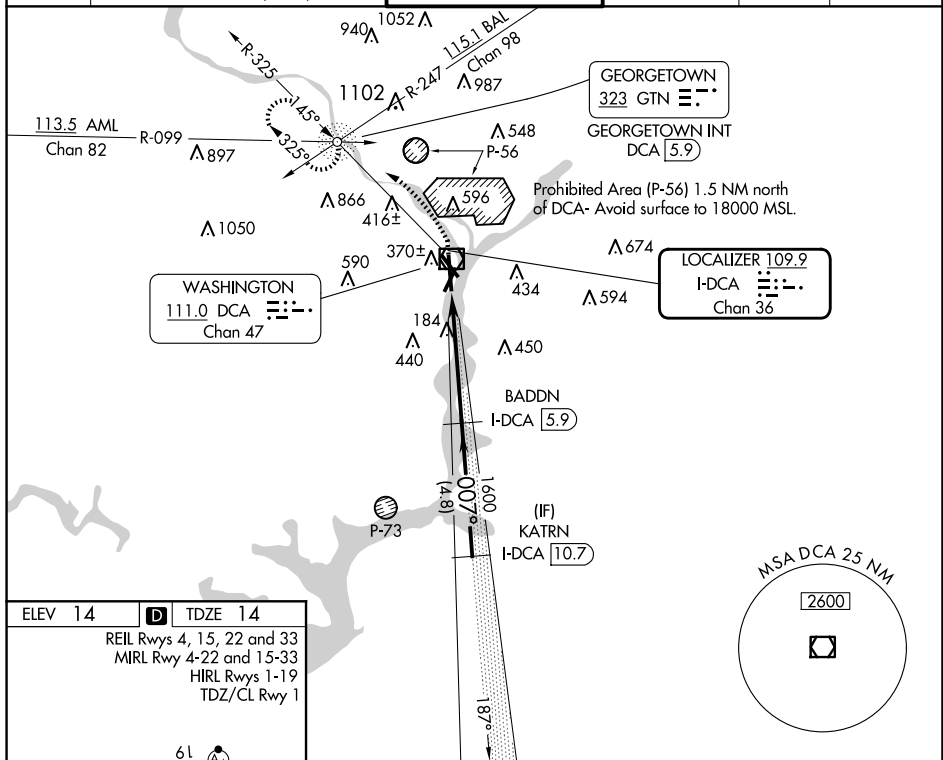


ALSF-2



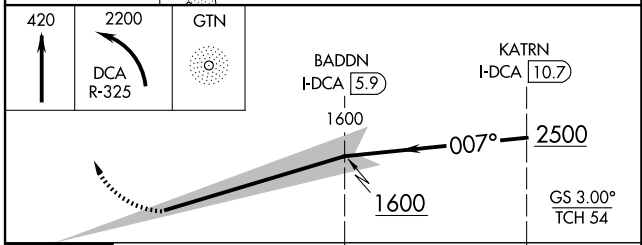
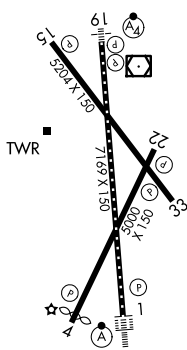
MISSED APPROACH: Climb to 420 then climbing left turn to 2200 on DCA VOR/DME R-325 to GTN NDB/INT/DCA 5.9 DME and hold.

| | | | | | | | | |
|------------------------------|------------------------|--|------------------|--|-------------|--|----------|-------|
| D-ATIS 132.65 | POTOMAC APP CON | | WASHINGTON TOWER | | GND CON | | CLNC DEL | CPDLC |
| 119.85 239.25 124.2 360.8 | (WEST/SOUTH) (EAST) | | 119.1 257.6 | | 121.7 257.6 | | 128.25 | |



| | | |
|---------|---|---------|
| ELEV 14 | D | TDZE 14 |
|---------|---|---------|

REIL Rwy 4, 15, 22 and 33
MIRL Rwy 4-22 and 15-33
HIRL Rwy 1-19
TDZ/CL Rwy 1



| | | | | |
|----------|----------------------|--------|--------|---|
| | 1007 | 4.8 NM | 4.8 NM | |
| CATEGORY | A | B | C | D |
| S-ILS 1 | RA 106/12 100 DA 114 | | | |

CATEGORY II ILS- SPECIAL AIRCREW
& AIRCRAFT CERTIFICATION REQUIRED