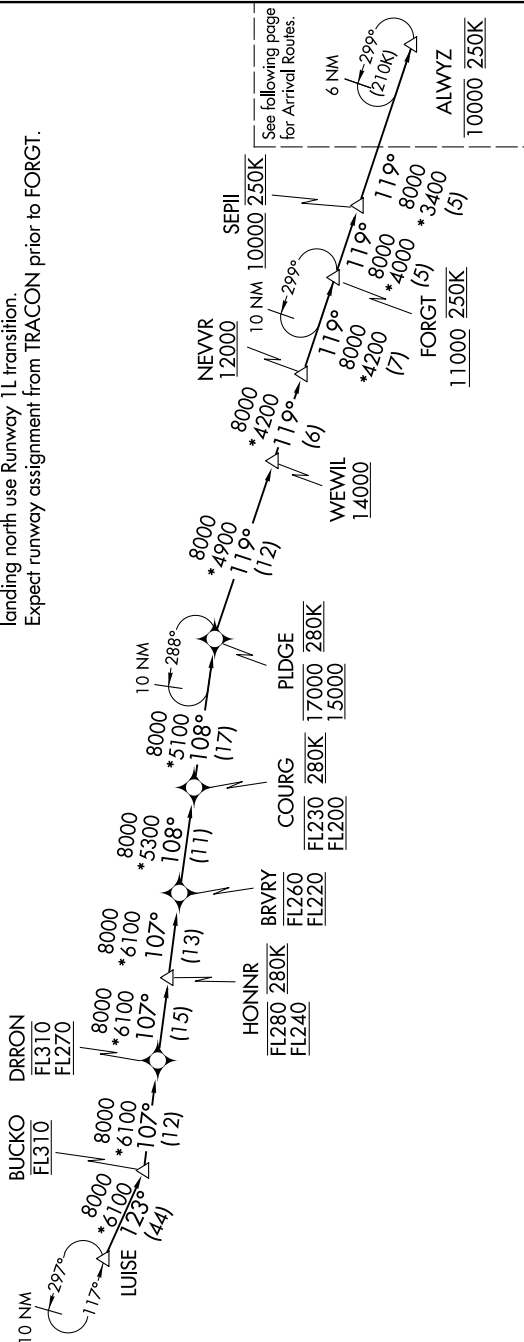


BUCKO TRANSITION (BUCKO.FRDM6):

RNAV-1 DME/DME/IRU or GPS.
RADAR required.

NOTE: Jet aircraft only.  
NOTE: Turboprop aircraft as assigned by ATC only.  
NOTE: PROHIBITED AREA (P-56) 1.5 NM north of KDCA - AVOID - surface to FL180.  
NOTE: Landing south at DCA use Runway 19 transition, landing north use Runway 1 transition.  
Landing south at ADW use Runway 19R transition, landing north use Runway 1L transition.  
Expect runway assignment from TRACON prior to FORGT.



(CONTINUED ON FOLLOWING PAGE)

NOTE: Chart not to scale.