

TOP ALTITUDE:
5000

DOGUE
4000 250K

D-ATIS

132.65

CLNC DEL

128.25

CPDLC

GND CON

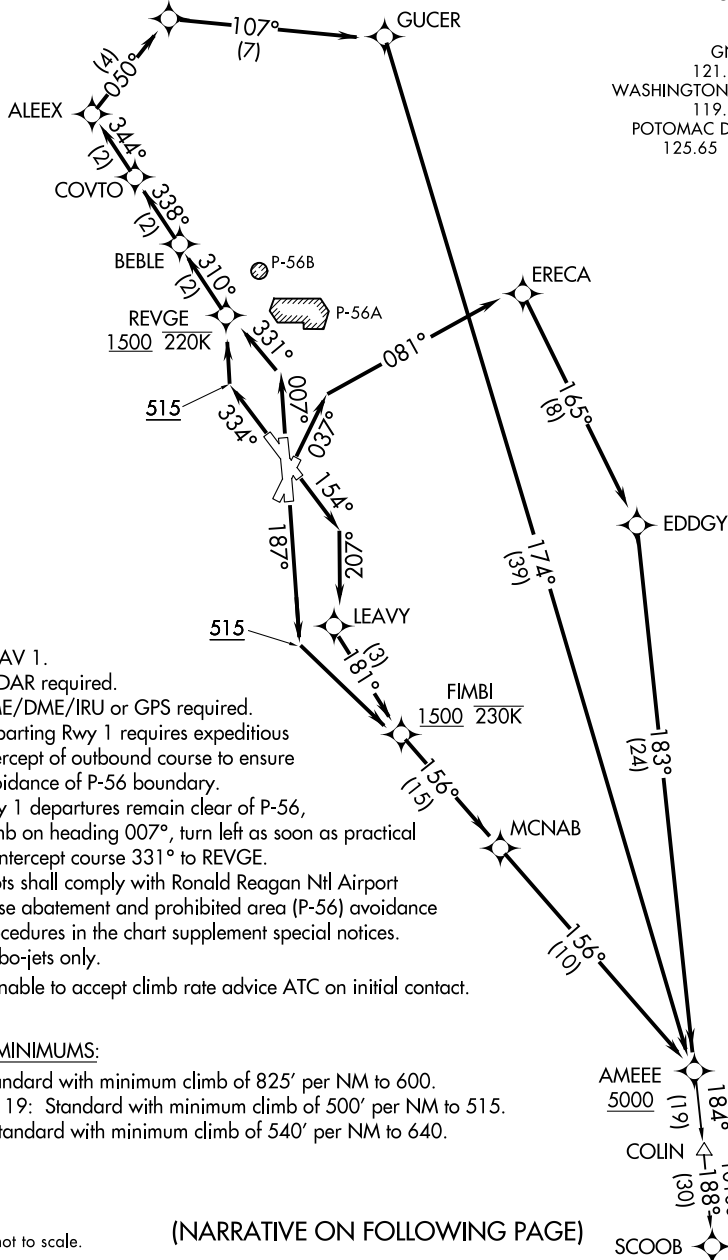
121.7 257.6

WASHINGTON TOWER

119.1 257.6

POTOMAC DEP CON

125.65 348.725



NOTE: RNAV 1.

NOTE: RADAR required.

NOTE: DME/DME/IRU or GPS required.

NOTE: Departing Rwy 1 requires expeditious intercept of outbound course to ensure avoidance of P-56 boundary.

NOTE: Rwy 1 departures remain clear of P-56, climb on heading 007°, turn left as soon as practical to intercept course 331° to REVGE.

NOTE: Pilots shall comply with Ronald Reagan Ntl Airport noise abatement and prohibited area (P-56) avoidance procedures in the chart supplement special notices.

NOTE: Turbo-jets only.

NOTE: If unable to accept climb rate advice ATC on initial contact.

TAKEOFF MINIMUMS:

Rwy 1: Standard with minimum climb of 825' per NM to 600.

Rwy 4, 15, 19: Standard with minimum climb of 500' per NM to 515.

Rwy 33: Standard with minimum climb of 540' per NM to 640.

NOTE: Chart not to scale.

(NARRATIVE ON FOLLOWING PAGE)

AMEEE ONE DEPARTURE (RNAV)

(AMEEE1.AMEEE) 31DEC20

WASHINGTON, DC

RONALD REAGAN WASHINGTON NTL (DCA)

NE-3, 10 JUL 2025 to 07 AUG 2025