

TACAN Y RWY 33

[USAF]

ROBINS AFB (KWRB)

* When ALS inop, increase CAT AB RVR to 55, vis to 1 mile; CAT CDE vis to 1 3/8 miles.
** Circling not authorized SW of Rwy 15-33.



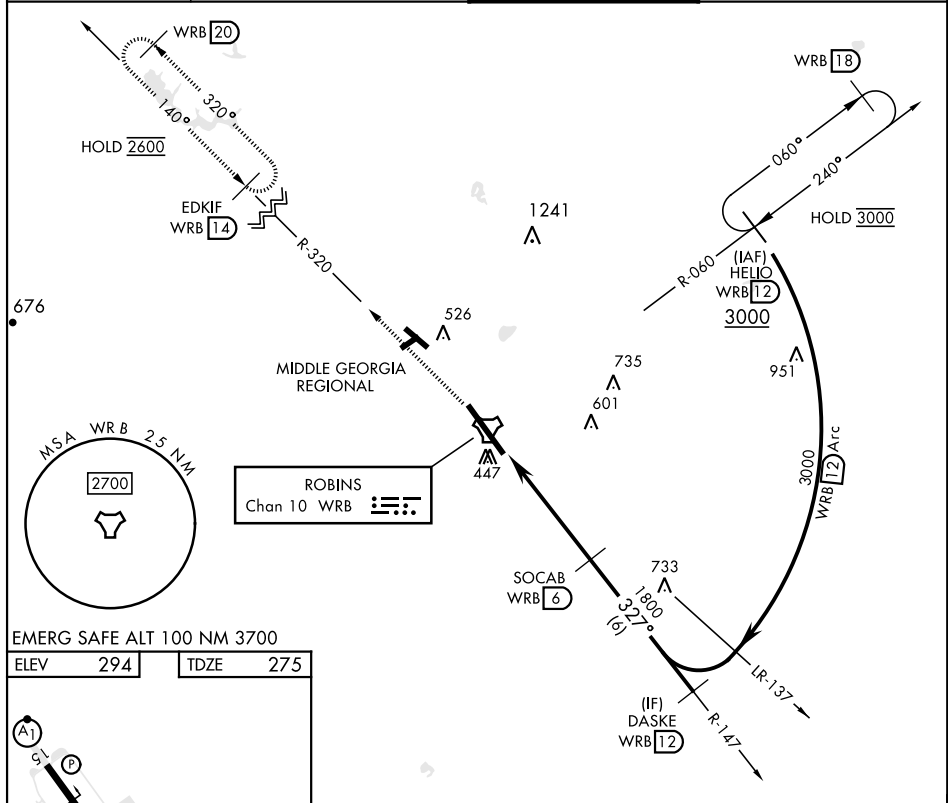
MISSED APPROACH: Climb To 2600 on WRB TACAN R-320 to EDKIF and hold.

ATIS
119.475 273.475

ATLANTA APP CON
124.2 279.6

TOWER
133.225 257.975

GND CON
121.85 275.8



EMERG SAFE ALT 100 NM 3700

ELEV	294		TDZE	275
------	-----	--	------	-----

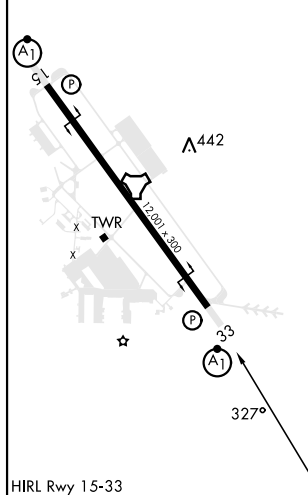


Figure 1 is a diagram illustrating a series of waypoints and distances. The diagram includes a scale bar for 5 NM, a heading of 270°, and a distance of 1800. Waypoints are labeled with their respective coordinates and distances: TACAN (2600 WRB R-320), CAPMI (WRB 1), WRB (2.3), SOCAB (WRB 6), and DASKE (WRB 12). The chart also shows a distance of 3000 and a heading of 327°.

CATEGORY	A	B	C	D	E
S-33*	720/24	445 (500-1/2)	720/45	445	(500-7/8)
CIRCLING**	780-1	486 (500-1)	880-1 1/2 586 (600-1 1/2)	960-2 666 (700-2)	1040-2 3/4 746 (800-2 3/4)

WARNER ROBINS, GEORGIA

32°38'N-83°36'W

ROBINS AFB (KWRB)

Amdt 1 11AUG22

TACAN Y RWY 33

SE-4, 10 JUL 2025 to 07 AUG 2025