

APCH CRS	Rwy Idg	12,001
326°	TDZE	275
	Arprt Elev	294

- (USAF)

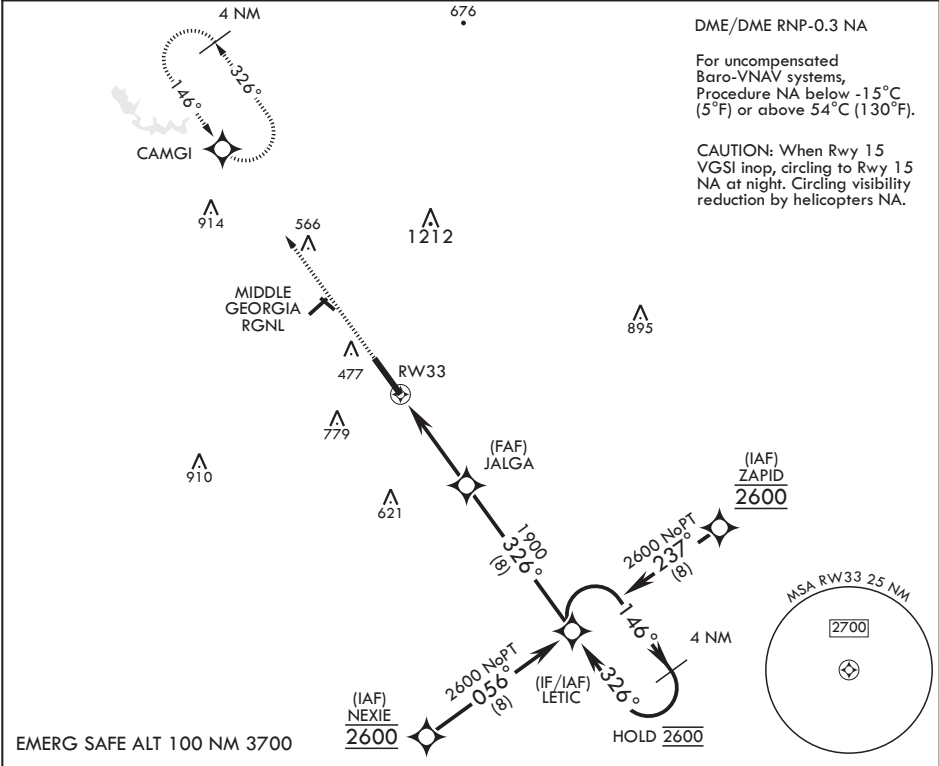
ROBINS AFB (KWRB)

* When ALS inop increase CAT ABCDE vis to 1 7/8 miles.
** When ALS inop, increase CAT AB RVR to 55, vis to 1 mile, CAT CDE vis to 1 3/8.
*** Circling NA SW of RWY 33-15.

ALSF-1

MISSED APPROACH: Climb to 2600 direct CAMGI and hold.

ATIS 119.475 273.475	ATLANTA APP CON/DEP CON 124.2 279.6	TOWER 133.225 257.975	GND CON 121.85 275.8
-------------------------	--	--------------------------	-------------------------



2600 CAMGI

VGSI and descent angle not coincident.

LETIC

4 NM Holding Pattern

146°

326°

2600

GP 2.97°

TCH 54

5 NM

1.6 NM to RWY33

JALGA

1900

RW33

CATEGORY	A	B	C	D	E
LNAV/VNAV DA*	820-1 ³ / ₈		545	(600-1 ³ / ₈)	
LNAV MDA**	760/24 485 (500- ¹ / ₂)		760/50	485 (500-1)	
CIRCLING***	820-1 ³ / ₈ 486 (600-1 ³ / ₈)		840-1 ¹ / ₂ 546 (600-1 ¹ / ₂)	960-2 666 (700-2)	1100-2 ³ / ₄ 806 (900-2 ³ / ₄)

12,001 x 300

TWR

BCN

HIRL all Rwys

SE-4, 10 JUL 2025 to 07 AUG 2025

SE-4, 10 JUL 2025 to 07 AUG 2025