

WARNER ROBINS, GEORGIA

## RNAV (GPS) RWY 15

APCH CRS 146°	Rwy Idg 12,001 TDZE 294 Arpt Elev 294
------------------	---

- (USAF)

ROBINS AFB (KWRB)

\* When ALS inop, increase CAT AB RVR to 55, vis to 1 mile, CAT CDE vis to 1 5/8 miles.  
\*\* Circling NA SW of Rwy 15-33.

ALSF-1

**MISSED APPROACH:** Climb to 2700 direct LETIC and hold.

ATIS  
119.475 273.475

ATLANTA APP CON/DEP CON  
124.2 279.6

TOWER  
133.225 257.975

GND CON  
121.85 275.8

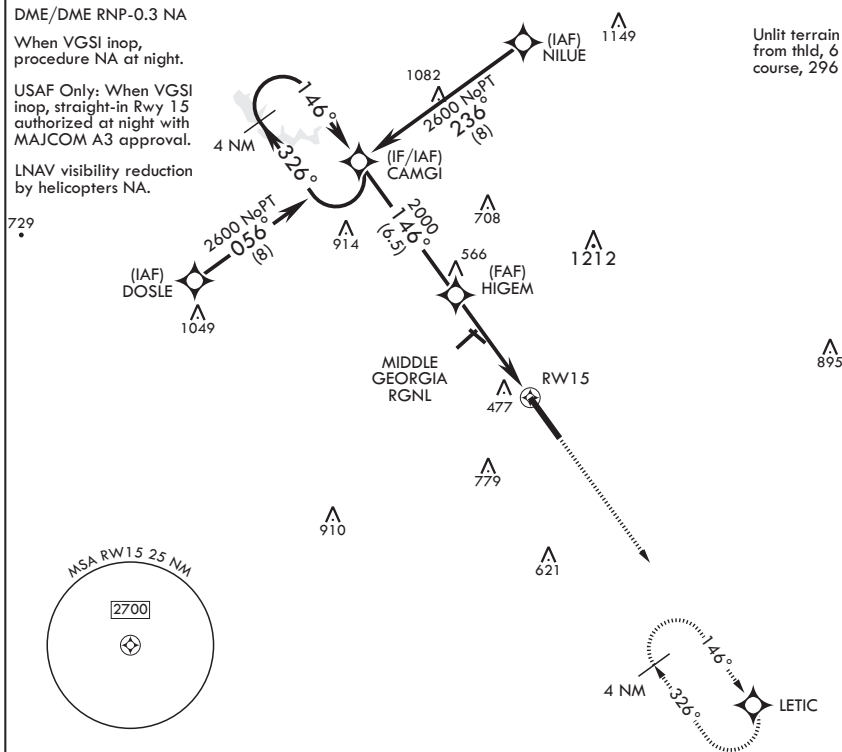
DME/DME RNP-0.3 NA

When VGSI inop,  
procedure NA at night.

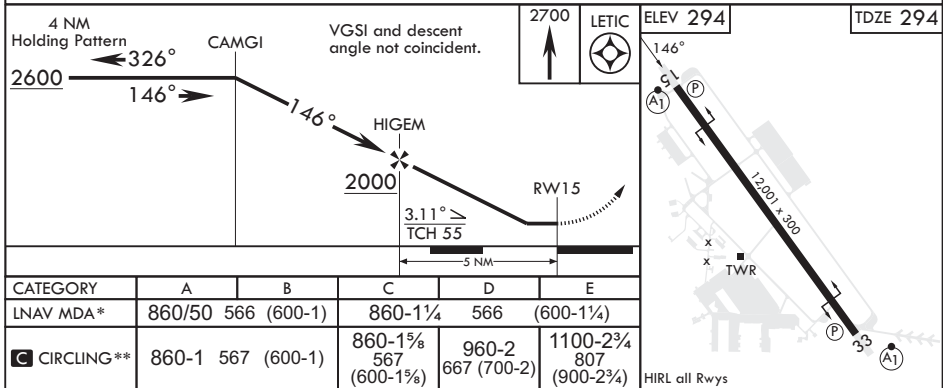
**USAF Only:** When VGS inop, straight-in Rwy 15 authorized at night with MAJCOM A3 approval.

LNAV visibility reduction  
by helicopters NA.

Unlit terrain 200 ft  
from thld, 6 ft right of  
course, 296 ft MSL.



EMERG SAFE ALT 100 NM 3700



WARNER ROBINS, GEORGIA

32°38'N - 83°36'W

ROBINS AFB (KWRB)

Amdt 4 31JAN19

## RNAV (GPS) RWY 15

SE-4, 10 JUL 2025 to 07 AUG 2025

SE-4, 10 JUL 2025 to 07 AUG 2025