

ILS or LOC Y RWY 33

LOC I-WRB 110.1	APCH CRS 326°	Rwy Idg 12,001 TDZE 275 Arpt Elev 294
---------------------------	-------------------------	------------------------------------------------------------------

[USAF]

ROBINS AFB (KWRB)

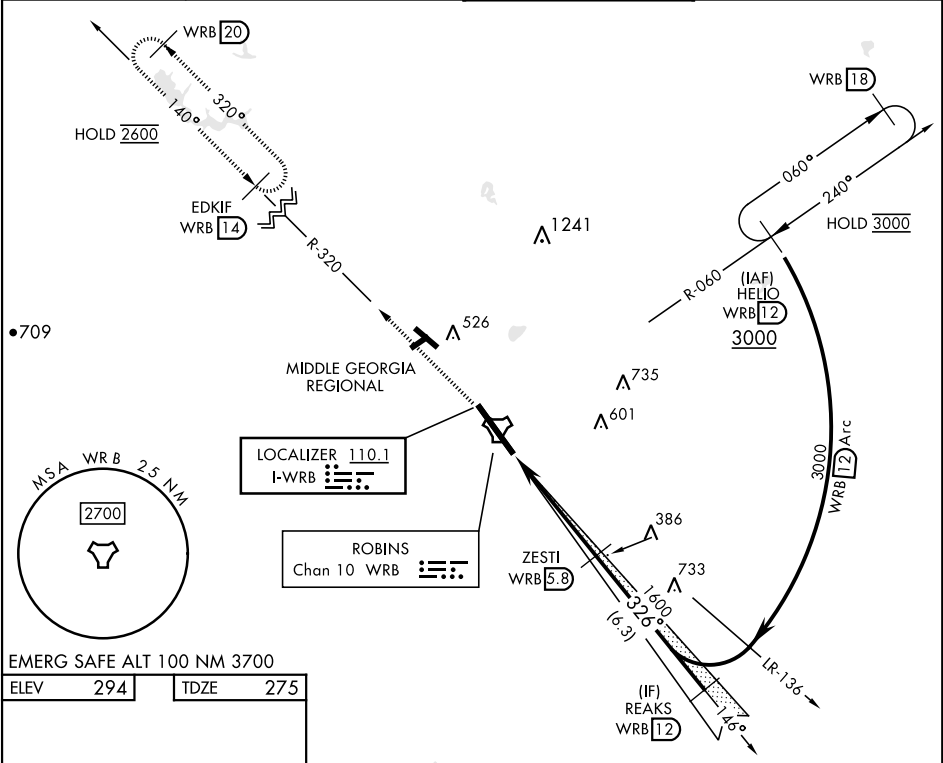
* When ALS inop, increase RVR to 40, vis to ¾ mile.
** When ALS inop, increase RVR to 55, vis to 1 mile.
*** Circling NA SW of Rwy 15-33.

ALSF-1

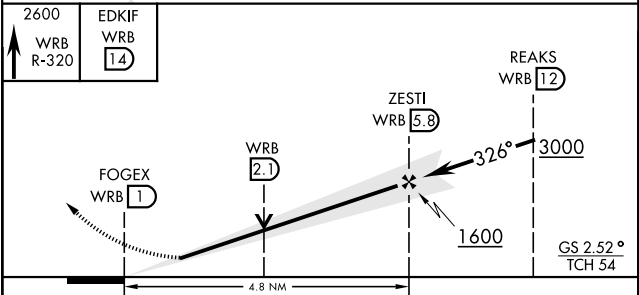
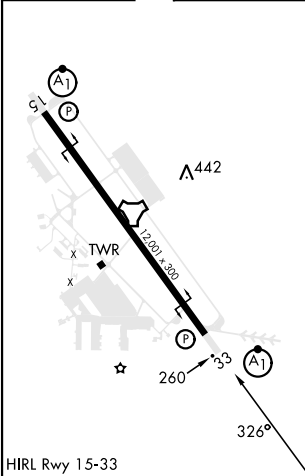
A1

MISSED APPROACH: Climb To 2600 on WRB TACAN R-320 to EDKIF and hold.

ATIS 119.475 273.475	ATLANTA APP CON 124.2 279.6	TOWER 133.225 257.975	GND CON 121.85 275.8
--------------------------------	---------------------------------------	---------------------------------	--------------------------------



EMERG SAFE ALT 100 NM 3700	
ELEV 294	TDZE 275



CATEGORY	A	B	C	D	E
S-ILS 33*	475/24		200	(200-½)	
S-LOC 33**	640/24	365 (400-½)	640/35	365 (400-¾)	
*** CIRCLING	780-1	486 (500-1)	880-1½ 586 (600-1½)	960-2 666 (700-2)	1040-2¾ 746 (800-2¾)

ILS or LOC Y RWY 33

SE-4, 10 JUL 2025 to 07 AUG 2025

SE-4, 10 JUL 2025 to 07 AUG 2025