

WAAS CH 65925 W18A	APP CRS 179°	Rwy Idg 5001 TDZE 275 Apt Elev 279
--	------------------------	---

RNAV (GPS) RWY 18
WALNUT RIDGE RGNL (ARG)

V For uncompensated Baro-VNAV systems, LNAV/VNAV NA below -15°C (5°F) or above 42°C (107°F). DME/DME RNP-0.3 NA. When local altimeter setting not received, use Jeoneseboro altimeter setting and increase LPV DA to 529 feet, LNAV/VNAV DA to 579 feet, and all MDAs 60 feet; increase Circling Cat D visibility ¼ SM. For inoperative ODALS, increase LPV all Cats and LNAV/VNAV all Cats visibility to ¾ mile and LNAV Cat C and D visibility to 1 mile. Baro-VNAV and VDP NA with Jeoneseboro altimeter setting.

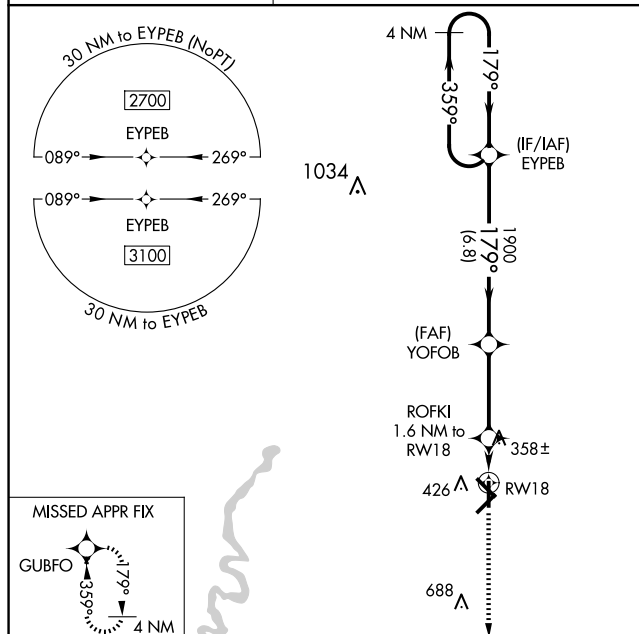
ODALS



MISSED APPROACH.
Climb to 3100 direct
GUBFO and hold.

AWOS-3PT
126,525

MEMPHIS CENTER
120,075 289.4

UN|COM
122.8 (CTAF) **L**

4 NM Holding Pattern

EYFEB

YOFOB

ROFKI

3100

GUBFO

*LNAV only.

2700

359°

179°

179°

1900

1.6 NM to RW18

*1 NM to RW18

RW18

*820

GP 3.00°

TCH 45

6.8 NM

3.4 NM

0.6 NM

1 NM

CATEGORY	A	B	C	D
LPV DA		475- $\frac{3}{4}$	200 (200- $\frac{3}{4}$)	
LNAV/VNAV DA		525- $\frac{3}{4}$	250 (300- $\frac{3}{4}$)	
LNAV MDA	620- $\frac{3}{4}$	345 (400- $\frac{3}{4}$)	620- $\frac{7}{8}$	345 (400- $\frac{7}{8}$)
CIRCLING	760-1	481 (500-1)	800-1 $\frac{1}{2}$ 521 (600-1 $\frac{1}{2}$)	1000-2 $\frac{1}{4}$ 721 (800-2 $\frac{1}{4}$)

WALNUT RIDGE, ARKANSAS
Amdt 1B 20MAY21

36°07'N-90°56'W

WALNUT RIDGE RGNL (ARG)
RNAV (GPS) RWY 18

SC-1, 10 JUL 2025 to 07 AUG 2025