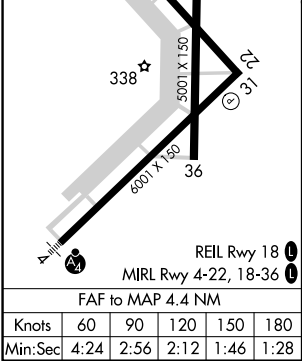
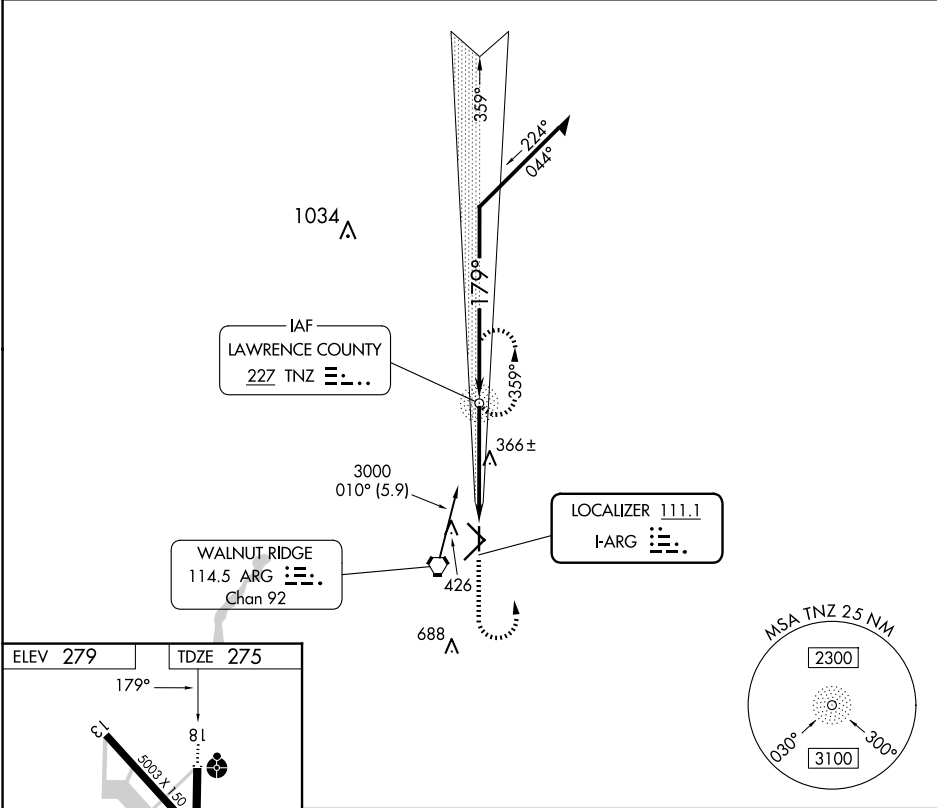


LOC I-ARG 111.1	APP CRS 179°	Rwy Idg TDZE Apt Elev	5001 275 279
---------------------------	------------------------	-----------------------------	---

LOC RWY 18
WALNUT RIDGE RGNL (ARG)

ADF required. ▼ ▲ NA Inop table does not apply to S-18 Cat D.	ODALS ● …	MISSED APPROACH: Climb to 900 then climbing left turn to 1700 direct TNZ NDB and hold.
---	--------------	--

AWOS-3PT 126.525	MEMPHIS CENTER 120.075 289.4	UNICOM 122.8 (CTAF) 0
----------------------------	--	---------------------------------



	900	1700	TNZ	TNZ NDB	Remain within 10 NM
	↑	↶	○	○	
	359° 3000 179° 1700				
	≤ 2.98° TCH 45				
	4.4 NM				
CATEGORY	A	B	C	D	
S-18	620-3/4	345 (400-3/4)	620-7/8 345 (400-7/8)	620-1 1/4 345 (400-1 1/4)	
CIRCLING	760-1	481 (500-1)	800-1 1/2 521 (600-1 1/2)	1000-2 1/4 721 (800-2 1/4)	

SC-1, 10 JUL 2025 to 07 AUG 2025

SC-1, 10 JUL 2025 to 07 AUG 2025